

CHALLENGER DESIGNS

Outdoor Kitchens

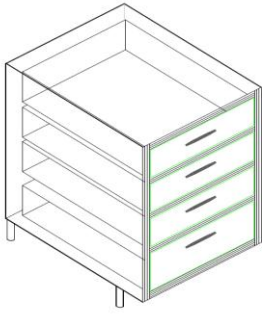
7700 Series

2014 List Prices & Standards

Effective Date: September 1, 2013

This Page Is Intentionally Left Blank

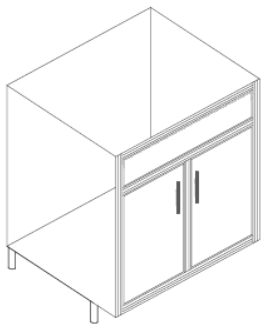
Note: All Base Cabinets are 24" Deep. Add 10% for Cabinets 28" or 30" Deep, and 20% for Cabinets 36" Deep.



Outdoor Drawer Base Cabinet, 4-Drawers

Drawers 1-3: 5", Drawer 4: 7"

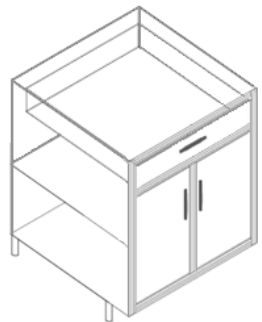
Item	Width	Description	Price
ODBC-153524	15"	4-Drawer Base	
ODBC-183524	18"	4-Drawer Base	
ODBC-213524	21"	4-Drawer Base	
ODBC-243524	24"	4-Drawer Base	
ODBC-273524	27"	4-Drawer Base	
ODBC-303524	30"	4-Drawer Base	
ODBC-333524	33"	4-Drawer Base	
ODBC-363524	36"	4-Drawer Base	



Outdoor Sink Base Cabinet

False Panel at Top, No Shelf, No Drawer

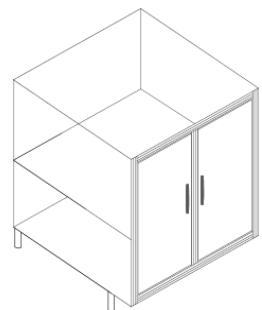
Item	Width	Description	Price
OSB-183524	18"	Sink Base, 1-Door	
OSB-213524	21"	Sink Base, 1-Door	
OSB-243524	24"	Sink Base, 1-Door	
OSB-273524	27"	Sink Base, 2-Doors	
OSB-303524	30"	Sink Base, 2-Doors	
OSB-333524	33"	Sink Base, 2-Doors	
OSB-363524	36"	Sink Base, 2-Doors	
OSB-393524	39"	Sink Base, 2-Doors	
OSB-423524	42"	Sink Base, 2-Doors	
OSB-453524	45"	Sink Base, 2-Doors	
OSB-483524	48"	Sink Base, 2-Doors	



Outdoor Single Drawer Door Base Cabinet

5" Drawer, 1 Full Length Shelf

Item	Width	Description	Price
OSDDB-153524	15"	Single Drawer Door Base, 1-Door	
OSDDB-183524	18"	Single Drawer Door Base, 1-Door	
OSDDB-213524	21"	Single Drawer Door Base, 1-Door	
OSDDB-243524	24"	Single Drawer Door Base, 1-Door	
OSDDB-273524	27"	Single Drawer Door Base, 2-Doors	
OSDDB-303524	30"	Single Drawer Door Base, 2-Doors	
OSDDB-333524	33"	Single Drawer Door Base, 2-Doors	
OSDDB-363524	36"	Single Drawer Door Base, 2-Doors	

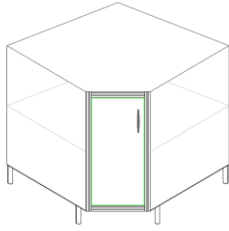


Outdoor Door Base Cabinet

1 Full Length Shelf

Item	Width	Description	Price
ODB-123524	12"	Door Base, 1-Door	
ODB-153524	15"	Door Base, 1-Door	
ODB-183524	18"	Door Base, 1-Door	
ODB-213524	21"	Door Base, 1-Door	
ODB-243524	24"	Door Base, 1-Door	
ODB-273524	27"	Door Base, 2-Doors	
ODB-303524	30"	Door Base, 2-Doors	
ODB-333524	33"	Door Base, 2-Doors	
ODB-363524	36"	Door Base, 2-Doors	

Note: All Base Cabinets are 24" Deep. Add 10% for Cabinets 28" or 30" Deep, and 20% for Cabinets 36" Deep.

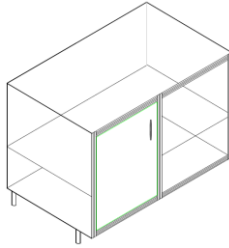


Outdoor Inside Corner Base Cabinet

1 Full Length Shelf

Item	Width	Description	Price
OICCB-363524	36"	Inside Corner Base, 1-Door	

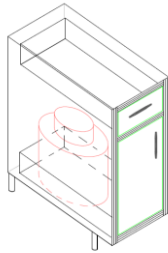
*Door Width = 13 3/4"



Outdoor Blind Base Cabinet

1 Full Length Shelf

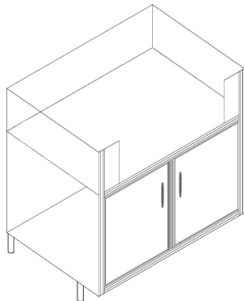
Item	Width	Description	Price
OBBC-483524	48"	Blind Base, 1-Door	



Outdoor Propane Base Cabinet

5" Drawer, Slide Out Tank Tray

Item	Width	Description	Price
OPC-183524	18"	Liquid Propane (L.P.) Base, 1-Door	

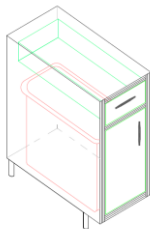


Outdoor Gas Side Burner/Grill Base Cabinet

No Shelf

Item	Width	Description	Price
OGGB-183524	18"	Gas Side Burner Base, 1-Door	
OGGB-213524	21"	Gas Side Burner Base, 1-Door	
OGGB-243524	24"	Gas Side Burner Base, 1-Door	
OGGB-273524	27"	Gas Side Burner Base, 2-Doors	
OGGB-303524	30"	Gas Side Burner Base, 2-Doors	
OGGB-333524	33"	Gas Grill Base, 2-Doors	
OGGB-363524	36"	Gas Grill Base, 2-Doors	
OGGB-423524	42"	Gas Grill Base, 2-Doors	
OGGB-483524	48"	Gas Grill Base, 2-Doors	

**Please provide Side Burner/Grill Specifications*

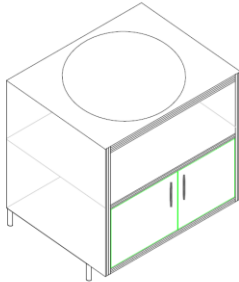


Outdoor Waste Basket Base Cabinet

1 - 5" Drawer, Slide Out Waste Basket Tray

Item	Height	Description	Price
OWBC-153524	15"	Waste Basket Base, 1-Door	

Note: All Base Cabinets are 24" Deep. Add 10% for Cabinets 28" or 30" Deep, and 20% for Cabinets 36" Deep.



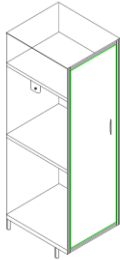
Outdoor Ceramic Grill Base Cabinets

No Shelves, with Adjustable Legs

Item	Width	Description	Price
OCGC-243524	24"	Ceramic Grill Base, 1-Door <i>Medium or Large Ceramic Grill</i>	
XLOCGC-303530	30"	Ceramic Grill Base, 2 Doors <i>Extra Large Ceramic Grill</i>	
OICGC-363524	36"	Inside Corner Ceramic Grill, 1-Door (see OICCB-363524 for reference, Door Width = 13 3/4") <i>Medium, Large, or Extra Large Ceramic Grill</i>	

*Please Provide Grill Specifications.

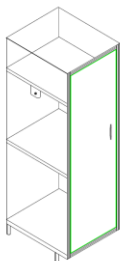
*Mobile unit is recommended. If unit is to remain stationary against a wall, the cabinet must be 28" Deep for a Medium Grill, 32" Deep for a Large Grill, and 36" Deep for an Extra Large Grill



78" Outdoor Locker Cabinets

2 Full Length Shelves, 1 Coat Hanger

Item	Width	Description	Price
OKCL-187824	18"	Locker, 1-Door	
OKCL-217824	21"	Locker, 1-Door	
OKCL-247824	24"	Locker, 1-Door	
OKCL-277824	27"	Locker, 1-Door	
OKCL-307824	30"	Locker, 1-Door	



84" Outdoor Locker Cabinets

2 Full Length Shelves, 1 Coat Hanger

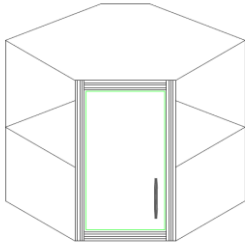
Item	Width	Description	Price
GCL-188424	18"	Locker, 1-Door	
GCL-218424	21"	Locker, 1-Door	
GCL-248424	24"	Locker, 1-Door	
GCL-278424	27"	Locker, 1-Door	
GCL-308424	30"	Locker, 1-Door	

Note: All Base Cabinets Options are for 24" Deep Cabinets. Add 10% for Cabinets 28" or 30" Deep, and 20% for Cabinets 36" Deep.

Outdoor Base/Locker Cabinet Options

	Item	Width	Description	Price
Additional Base/Locker Shelves	BLAS-1824	18"	Additional Shelf	
	BLAS-2124	21"	Additional Shelf	
	BLAS-2424	24"	Additional Shelf	
	BLAS-2724	27"	Additional Shelf	
	BLAS-3024	30"	Additional Shelf	
Additional Base/Locker Drawers or Pull Out Shelves at fixed height (2" Drawers height)	BLAD/BLAPOS-1824	18"	Additional Drawer/Pull Out Shelf	
	BLAD/BLAPOS-2124	21"	Additional Drawer/Pull Out Shelf	
	BLAD/BLAPOS-2424	24"	Additional Drawer/Pull Out Shelf	
	BLAD/BLAPOS-2724	27"	Additional Drawer/Pull Out Shelf	
	BLAD/BLAPOS-3024	30"	Additional Drawer/Pull Out Shelf	
Non-Locking Trigger Latch (std)	NLTL	-	Standard Trigger Latch	
8" Stainless Steel Pull (std)	SS PULL	-	Standard 8" SS Pull	
Locking Trigger Latches (upgrade)	LTL	-	Locking Trigger Latch	
Stainless Steel Adjustable Leg Supports (std)	SS LEG	-	Stainless Steel Adjustable Leg	
3" Casters (2 Stationary, 2 Swivel) (std)	CAST	1 1/4"	3" x 1 1/4" Rubber Coated Casters	
3" Casters (4 Swivel) (upgrade)	SWIVEL CAST	1 1/4"	3" x 1 1/4" Rubber Coated Casters	

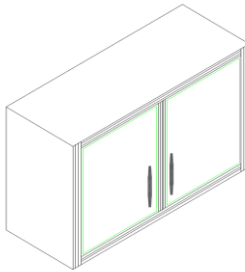
Note: All Outdoor Overhead Cabinets are 12" Deep.



Outdoor Overhead Inside Corner Cabinets

1 Full Length Shelf

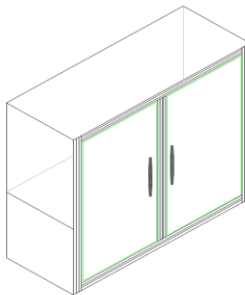
Item	Height	Description	Price
KOIC-241812	18" H	Overhead Inside Corner, 1-Door, No Shelf	
KOIC-242412	24" H	Overhead Inside Corner, 1-Door, 1-Shelf	
KOIC-243012	30" H	Overhead Inside Corner, 1-Door, 1-Shelf	



Outdoor 18" Overhead Cabinets

No Shelf

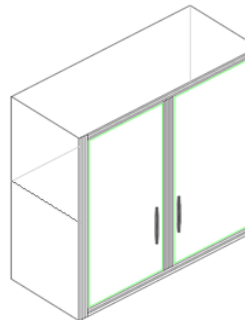
Item	Width	Description	Price
KOC-121812	12"	18" Overhead, 1-Door	
KOC-151812	15"	18" Overhead, 1-Door	
KOC-181812	18"	18" Overhead, 1-Door	
KOC-211812	21"	18" Overhead, 1-Door	
KOC-241812	24"	18" Overhead, 1-Door	
KOC-271812	27"	18" Overhead, 2-Doors	
KOC-301812	30"	18" Overhead, 2-Doors	
KOC-331812	33"	18" Overhead, 2-Doors	
KOC-361812	36"	18" Overhead, 2-Doors	



Outdoor 24" Overhead Cabinets

1 Full Length Shelf

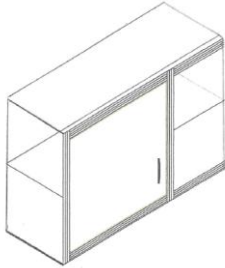
Item	Width	Description	Price
KOC-122412	12"	24" Overhead, 1-Door	
KOC-152412	15"	24" Overhead, 1-Door	
KOC-182412	18"	24" Overhead, 1-Door	
KOC-212412	21"	24" Overhead, 1-Door	
KOC-242412	24"	24" Overhead, 1-Door	
KOC-272412	27"	24" Overhead, 2-Doors	
KOC-302412	30"	24" Overhead, 2-Doors	
KOC-332412	33"	24" Overhead, 2-Doors	
KOC-362412	36"	24" Overhead, 2-Doors	



Outdoor 30" Overhead Cabinets

1 Full Length Shelf

Item #	Width	Description	Price
KOC-123012	12"	30" Overhead, 1-Door	
KOC-153012	15"	30" Overhead, 1-Door	
KOC-183012	18"	30" Overhead, 1-Door	
KOC-213012	21"	30" Overhead, 1-Door	
KOC-243012	24"	30" Overhead, 1-Door	
KOC-273012	27"	30" Overhead, 2-Doors	
KOC-303012	30"	30" Overhead, 2-Doors	
KOC-333012	33"	30" Overhead, 2-Doors	
KOC-363012	36"	30" Overhead, 2-Doors	



Outdoor Overhead Blind Corner Cabinet

Item	Width	Description	Price
OOBC-361812	36"	18" Overhead Blind Corner 1-Door, No Shelf	
OOBC-362412	36"	24" Overhead Blind Corner 1-Door, 1 Shelf	
OOBC-363612	36"	36" Overhead Blind Corner 1-Door, 1 Shelf	

Outdoor Overhead Cabinet Options

	Item	Width	Description	Price
Additional Overhead Shelves	OAS-12	12"	Additional Shelf	
	OAS-15	15"	Additional Shelf	
	OAS-18	18"	Additional Shelf	
	OAS-21	21"	Additional Shelf	
	OAS-24	24"	Additional Shelf	
	OAS-27	27"	Additional Shelf	
	OAS-30	30"	Additional Shelf	
	OAS-33	33"	Additional Shelf	
	OAS-36	36"	Additional Shelf	
Standard Non-Locking Trigger Latch	NLT	-	Standard Trigger Latch	
Standard 8" Stainless Steel Pull	SS PULL	-	Standard 8" SS Pull	
Upgrade Locking Trigger Latches	LTL	-	Locking Trigger Latch	

Outdoor Kitchen Counter Tops

Aluminum Color Options: Silver Vein (std), Copper Vein, Textured Black, Mocha

	Item	Width	Description	Price
Aluminum Counter Top <i>(for 24" Deep Cabinets)</i>	ACT- 25	-	25" Deep x 1" Thick	
Aluminum Counter Top <i>(for 28" Deep Cabinets)</i>	ACT- 29	-	29" Deep x 1" Thick	
Aluminum Counter Top <i>(for 30" Deep Cabinets)</i>	ACT- 31	-	31" Deep x 1" Thick	
Aluminum Counter Top <i>(for 36" Deep Cabinets)</i>	ACT- 37	-	37" Deep x 1" Thick	
Stainless Steel Counter Top <i>(for 24" Deep Cabinets)</i>	SST-25	-	25" Deep x 1" Thick	
Stainless Steel Counter Top <i>(for 28" Deep Cabinets)</i>	SST-29	-	29" Deep x 1" Thick	
Stainless Steel Counter Top <i>(for 30" Deep Cabinets)</i>	SST-31	-	31" Deep x 1" Thick	
Stainless Steel Counter Top <i>(for 36" Deep Cabinets)</i>	SST-37	-	37" Deep x 1" Thick	

Counter Top Backsplash Options

	Item	Width	Description	Price
Aluminum 4" Backsplash	ABS-4	-	4" High x 1" Thick	
Stainless Steel 4" Backsplash	SSBS-4	-	4" High x 1" Thick	

Outdoor 72" Patio Bar

2 - 4" Drawers, 2 Adjustable Shelves, Sink and Faucet

	Item	Width	Description	Price
Patio Wet Bar Deluxe Ships complete with Sink, Faucet, and On-Demand Water System (12 Volt Pump, one 5-gal Fresh Water Tank, and one 5-gal Gray Water Tank)	PWBD-724332	72"	Base Unit with 1 ½" Thick Countertop is 72" Wide x 37" High x 26" Deep 1 ½" Thick Bar Top, mounted with 5" High Stainless Steel Bar Risers is 72" Wide x 43 ¼" High x 15" Deep	
Patio Wet Bar Standard Ships with Sink and Faucet only (no On-Demand Water System)	PWBS-724332	72"	Overall Footprint is 72" Wide x 43 ¼" High x 32" Deep	



Outdoor 66" Patio Bar

1 Drawer, 2 Adjustable Shelves

	Item	Width	Depth	Price
Patio Bar (no Sink or Faucet included)	PB-664235	66"	Base Unit with 1 ½" Thick Countertop is 48" Wide x 37" High x 24" Deep 1 ½" Thick U-Shaped Bar Top mounted with 5" High Stainless Steel Bar Risers is 66" Wide x 43 ¼" High x 13 ½" Deep Overall Footprint is 66" Wide x 42 ¼" High x 34 ½" Deep	



Outdoor Kitchen Options

	Item	Width	Description	Price
Aluminum Bar Top with Stainless Steel Bar Riser	ABT	16" D	1" Thick Bar Top is Powder Coated for durability and includes 5" High Bar Corner Risers and any necessary Center Supports	
Stainless Steel Bar Top with Stainless Bar Riser	SSBT	16" D	1" Thick Bar Top includes 5" High Bar Corner Risers and any necessary Center Supports	
Bar Riser Only – Stainless Steel Corner Risers	BR-CORNER SET	8"	8" Wide x 8" Wide x 5" High (sold as 1 set of 2 corner risers)	
Center Supports <i>(needed for every 5' of bar top)</i>	BR-CENTER	12"	12" Wide x 5" High (sold per piece)	
Slide Out Spice Rack	SPICE	-	Can and paper towel storage slide out	
Laser Cut Design on Bar Back	LASERBAR	-	For standard designs only, custom designs to be quoted separately	
LED Lights behind Laser Cut Bar Back	LED-BB	-	-	
LED Lights on Bar Top	LED-BT	-	-	
Drawer for Ice Chest <i>(Chest sold separately)</i>	ICEDRAWER	-	Internal aluminum pull-out drawer to hold ice chest	
Ice Chest	ICECHEST	-	45 Liter	
Standard Sink and Faucet – 15"	SINK-15	15"	-	
Premium Sink and Sprayer Faucet – 30"	SINK-30	30"	-	
On Demand Water System	WTP	-	12 Volt Pump, one 5-gal Fresh Water Tank, and one 5-gal Gray Water Tank	
TV Lift <i>(cabinet and TV for lift sold separately)</i>	TVL	-	Framework, hardware, and remote to support, raise, and lower a 37" flat panel TV Will fit in a 42" or larger Base Cabinet	
Towel Bar Handle	TBH	-	Towel Bar/Grab Handle for maneuvering units	
End Panels	EP-24D	-	35" High x 24" Deep	
	EP-28D	-	35" High x 28" Deep	
	EP-30D	-	35" High x 30" Deep	
	EP-36D	-	35" High x 36" Deep	
Filler Panel – 3"	FP3	3"	3" Wide x 31" High	
Filler Panel – 6"	FP6	6"	6" Wide x 31" High	
Finished Back Panel on Exposed Islands	BP1	-	Frame and Panel	
Toe Kick	TK1	-	Aluminum panel that mounts in front of adjustable legs	
Locking Trigger Latch	LTL	-	Key locking latch, supplied with two keys per finished kitchen	

Outdoor Kitchen Color Options

Frame/Aluminum Counter Top/Aluminum Bar Top Colors (powder coated)	Silver Vein Mocha	Copper Vein	Textured Black
Standard Panel Colors	Metallic Pewter Black Red	Dark Green Matte Black White	Charcoal Gray Blue
Premium Panel Colors <i>(require 10% up-charge)</i>	Silver Vein Mocha	Copper Vein Woodgrain	Textured Black Camouflage

****Custom Colors Available****

Checklist for Outdoor Kitchen Cabinets

P.O. Number	Order Date
Dealer Information	Ship To Information

- | | |
|--|---|
| <p>1. Specify Countertop Material</p> | <p>Aluminum _____ Stainless Steel _____</p> |
| <p>2. Specify Colors</p> | <p>Countertop (if aluminum) _____
 Frame _____
 Doors & Panels _____</p> |
| <p>3. Supply gas grill brand, model and size specifications, if any
 <i>(Note that the base cabinet must be wide and deep enough to have at least 3" of clearance on all side, plus if unit is to be against a wall, the lid clearance must be taken into account.)</i></p> | <p>Brand _____
 Model _____
 Size _____</p> |
| <p>Supply gas side burner brand, model, and size specifications, if any
 <i>(Note that the base cabinet must be wide and deep enough to have at least 3" of clearance on all sides. Also, side burner is not recommended in bar riser area.)</i></p> | <p>Brand _____
 Model _____
 Size _____</p> |
| <p>Specify Natural Gas or L.P. Gas</p> | <p>Natural Gas _____ L.P. Gas _____</p> |
| <p>If L.P. Gas, specify with or without slide-out L.P. tank tray</p> | <p>With slide-out _____ Without slide-out _____</p> |
| <p>4. Specify ceramic grill brand, model, and size specifications
 <i>(A mobile unit on casters is recommended. If unit is to remain stationary against a wall, the lid clearance must be taken into account. The cabinet must be 28" deep for a Medium grill, 32" deep for a Large grill, and 36" deep for an Extra Large grill)</i></p> | <p>Brand _____
 Model _____
 Size _____</p> |
| <p>5. Specify with or without Finished Back Panel <i>(req. for exposed back)</i>
 If with, specify length of Finished Back Panel</p> | <p>With Fin. Back _____ Without Fin. Back _____
 Length _____</p> |
| <p>6. Specify Latch</p> | <p>Std. Non-Locking Trigger _____
 Std. 8" Stainless Steel _____
 Premium Locking Trigger _____</p> |
| <p>7. Specify Adjustable Legs or Casters
 Specify With or Without Toe Kick</p> | <p>Adjustable Legs _____ Casters _____
 With Toe Kick _____ Without Toe Kick _____</p> |
| <p>8. Specify with or without Bar Top with Riser
 If with, specify length of Bar Top with Riser</p> | <p>With Bar Top _____ Without Bar Top _____
 Length _____</p> |
| <p>9. If Countertop is NOT Challenger-supplied, we need to know the countertop thickness for proper grill cabinet configurations</p> | <p>Thickness (if not Challenger-supplied) _____</p> |
| <p>10. Specify hinge location for each door (left or right)</p> | <p>Hinge Locations (starting on left) _____</p> |

This Page Is Intentionally Left Blank