

CHALLENGERDESIGNS

+garage

7300 SERIES GARAGE

2020 LIST PRICES
&
STANDARDS

CLASSIC

- > Anodized Frame
- > Smooth Finish Doors, & Panels
- > Anodized Extruded Pulls
- > Pan Door Construction

ELITE

- > Powder Coated Frame, Doors, & Panels
- > Stainless Steel Pulls OR Powder Coated Extruded Pulls
- > Pan Door Construction

ELITE SHAKER

- > Powder Coated Frame, Doors, & Panels
- > Stainless Steel Pulls
- > 5 Piece Shaker Door Construction

5-Drawer Base



ITEM	WIDTH
5DBC-183524	18"
5DBC-213524	21"
5DBC-243524	24"
5DBC-273524	27"
5DBC-303524	30"
5DBC-333524	33"
5DBC-363524	36"

7-Drawer Base



ITEM	WIDTH
7DBC-183524	18"
7DBC-213524	21"
7DBC-243524	24"
7DBC-273524	27"
7DBC-303524	30"
7DBC-333524	33"
7DBC-363524	36"

Sink Base



False Panel at Top
 12" - 24" = 1 Door (LH or RH)
 27" - 48" = 2 Door (LH/RH)

ITEM	WIDTH
GSB-183524	18"
GSB-213524	21"
GSB-243524	24"
GSB-273524	27"
GSB-303524	30"
GSB-333524	33"
GSB-363524	36"
GSB-393524	39"
GSB-423524	42"
GSB-453524	45"
GSB-483524	48"

Single Drawer Door Base



1 Drawer: 5"H
 1 Full Width Shelf
 12" - 24" = 1 Door (LH or RH)
 27" - 36" = 2 Door (LH/RH)

ITEM	WIDTH
GSDDDB-153524	15"
GSDDDB-183524	18"
GSDDDB-213524	21"
GSDDDB-243524	24"
GSDDDB-273524	27"
GSDDDB-303524	30"
GSDDDB-333524	33"
GSDDDB-363524	36"

Door Base



1 Full Width Shelf
 12" - 24" = 1 Door (LH or RH)
 27" - 36" = 2 Door (LH/RH)

ITEM	WIDTH
GDB-123524	12"
GDB-153524	15"
GDB-183524	18"
GDB-213524	21"
GDB-243524	24"
GDB-273524	27"
GDB-303524	30"
GDB-333524	33"
GDB-363524	36"

Door Internal Slide Out Shelves Base



2 Internal Slide Outs (1 Top Middle, 1 Floor Mount)
 15" - 24" = 1 Door (LH or RH)
 27" & 30" = 2 Door (LH/RH)

ITEM	WIDTH
GISDB-153524	15"
GISDB-183524	18"
GISDB-213524	21"
GISDB-243524	24"
GISDB-273524	27"
GISDB-303524	30"

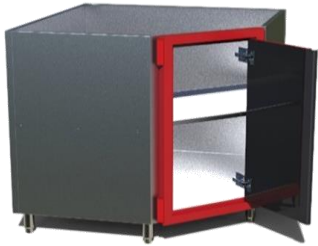
Knee Hole Pencil Drawer



7.25" High Drawer
 24" - 36" = 1 Drawer | 42" - 48" = 2 Drawer

ITEM	WIDTH
GKND-247.2524	24"
GKND-277.2524	27"
GKND-307.2524	30"
GKND-337.2524	33"
GKND-367.2524	36"
GKND-427.2524	42"
GKND-487.2524	48"

Inside Corner Base



1 Door (LH or RH)
 1 Full Width Shelf
 Door Width = 13 3/4"

CANNOT be at End of Cabinet Run or Beside Opening

ITEM	WIDTH
GICB-363524	36"

Blind Base



1 Door (LH or RH)
 1 Full Width Shelf

ITEM	WIDTH
GBBC-483524	48"

Bolt-Bin Base



1 Drawer (Left or Right Access)
25 Plastic Bolt Bins

ITEM	WIDTH
GBB-123524-RA	12"
GBB-123524-LA	12"

Waste Basket Base



1 Drawer: 5" H
Slide Out Waste Bin Tray
18" Single Waste Bin, 24" Double Waste Bin

ITEM	WIDTH
GWB-183524	18"
GWB-243524	24"

78" Locker s - 1 Door



1 Door (LH or RH)
2 Full Width Adjustable Shelves
1 Full Width Fixed Shelf with Coat Hanger

ITEM	WIDTH
GCL-187825.5	18"
GCL-217825.5	21"
GCL-247825.5	24"
GCL-277825.5	27"
GCL-307825.5	30"

84" Locker s - 1 Door

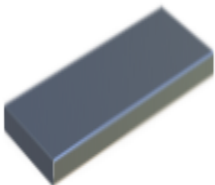


1 Door (LH or RH)
2 Full Width Adjustable Shelves
1 Full Width Fixed Shelf with Coat Hanger

ITEM	WIDTH
GCL-188425.5	18"
GCL-218425.5	21"
GCL-248425.5	24"
GCL-278425.5	27"
GCL-308425.5	30"

BASE & LOCKER OPTIONS

Additional Base & Locker Shelves



ITEM	WIDTH
BLAS-1224	12"
BLAS-1524	15"
BLAS-1824	18"
BLAS-2124	21"
BLAS-2424	24"
BLAS-2724	27"
BLAS-3024	30"
BLAS-3324	33"
BLAS-3624	36"

Large Double Rolling Tool Chest



POWDERCOATED TOP
HARD MAPLE BUTCHER BLOCK TOP

Two - 5 Drawer Tool Boxes (Either End)
One - Door Base Storage (Center)
Four Locking Swivel Casters
Towel/Grab Bar (Right)

ITEM	WIDTH
GTC-58.2538.525	58.25"
GTC-58.2538.525	58.25"

Mobile Island Base



Available with Legs 4"H Adjustable or 3"H Casters
12"-71" = 4 Casters/Legs, 72"-96" = 6 Casters/ Legs
CANNOT be used with Stand-Alone Appliances
Color Matches Cabinet Frame
Used for One Piece Build (Comparable to Tool Chest)

ITEM	WIDTH
OIB-12-48" x 20.875"D	12" - 48"
OIB-49-72 x 20.875"D	49" - 72"
OIB-73-96 x 20.875"D	73" - 96"

3.125" Shallower than cabinets
Example 24"D cabinet- 3.125"= 20.875"D Mobile Island Base
Island Base with Casters adds 5 7/8" to Cabinet Height
Island Base with Legs adds 5 9/16" to Cabinet Height

Note: All Overhead s are 12" Deep.

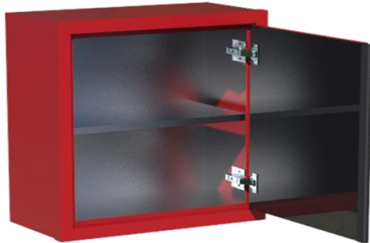
18" Overhead s



No Shelf
12" - 24" = 1 Door
27" - 36" = 2 Door

ITEM	WIDTH
GOC-121812	12"
GOC-151812	15"
GOC-181812	18"
GOC-211812	21"
GOC-241812	24"
GOC-271812	27"
GOC-301812	30"
GOC-331812	33"
GOC-361812	36"

24" Overhead s



1 Full Length Shelf
12" - 24" = 1 Door
27" - 36" = 2 Door

ITEM	WIDTH
GOC-122412	12"
GOC-152412	15"
GOC-182412	18"
GOC-212412	21"
GOC-242412	24"
GOC-272412	27"
GOC-302412	30"
GOC-332412	33"
GOC-362412	36"

30" H Overhead s



1 Full Length Shelf
12" - 24" = 1 Door
27" - 36" = 2 Door

ITEM	WIDTH
GOC-123012	12"
GOC-153012	15"
GOC-183012	18"
GOC-213012	21"
GOC-243012	24"
GOC-273012	27"
GOC-303012	30"
GOC-333012	33"
GOC-363012	36"

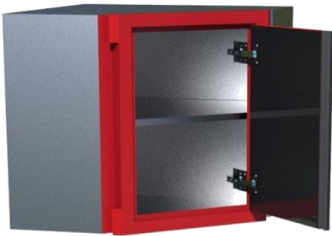
Overhead Blind Corner - 36"



18" High -No Shelf
24" & 30" - 1 Shelf
All Cabinets 1 Door

ITEM	WIDTH
GOBC-361812	36" W x 18" H
GOBC-362412	36" W x 24" H
GOBC-363012	36" W x 30" H

Overhead Inside Corner - 24" Wide



18" High -No Shelf
24" & 30" - 1 Shelf
All Cabinets 1 Door

ITEM	WIDTH
GOIC-241812	24" W x 18" H
GOIC-242412	24" W x 24" H
GOIC-243012	24" W x 30" H

OVERHEAD OPTIONS

Additional Overhead Shelves



ITEM	WIDTH
OAS-12	12"
OAS-15	15"
OAS-18	18"
OAS-21	21"
OAS-24	24"
OAS-27	27"
OAS-30	30"
OAS-33	33"
OAS-36	36"

GARAGE COUNTERTOPS

Aluminum Countertops & Options



ITEM	DIMENSIONS
ACT- 24.5	Countertop, 24.5" D x 1.25" Thick
ACT- 25.5	Countertop, 25.5" D x 1.25" Thick
ABS-4	Backsplash, 4" H x 1" Thick
ABT-16	Bar Top with Risers, 16"Dx1.25" Thick

.090 Aluminum, Powder Coated

ALL Pricing is Cost Per Lineal Inch

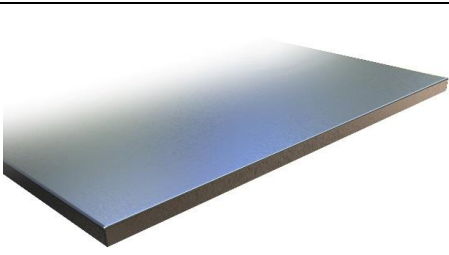
Countertop Overhang is 1/2" on all sides, UNLESS against wall

- Top Corner Support Measurements: 8"Wx8"Dx5"H; Center Support Measurements: 12"Wx5"H

Center Supports are needed for every 5' of bar top

Countertop Overlap of Bar Top is 9", Edge Overhang of 7"

Stainless Steel Countertop & Options



ITEM	WIDTH
SST-24.5	25" D x 1.25" Thick
SST-25	25" D x 1.25" Thick
SSBS-4	4" High x 1" Thick
SSBT-16	Bar Top with Risers, 16"Dx1.25" Thick

16G, Food Grade Stainless Steel
 ALL Pricing is Cost Per Lineal Inch
 Countertop Overhang is 1/2" on all sides, UNLESS against wall
 Top Corner Support Measurements: 8"Wx8"Dx5"H; Center Support Measurements: 12"Wx5"H
 Center Supports are needed for every 5' of Bar Top
 Countertop Overlap of Bar Top is 9", Edge Overhang of 7"

Butcher Block Countertop & Options

ITEM	WIDTH
BBT-24.5	25" D x 1.5" Thick
BBT-25	25" D x 1.5" Thick
BBS-4	4" High x 1 1/2" Thick

Clear Coated Maple Butcher Block
 ALL Pricing is Cost Per Lineal Inch
 Countertop Overhang is 1/2" on all sides, UNLESS against wall

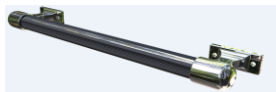
GARAGE ADD-ONS | OPTIONS

Sink & Plumb Options

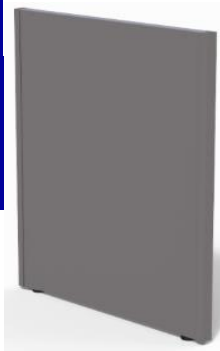


ITEM	WIDTH
SINK-30	30" Premium Sink and Sprayer Spring Faucet
	304, 18G Stainless Steel, Undermount Sink Installation Brushed Satin Finish Sink Basin, Brushed Nickel Finished Spring Faucet Overall Dimensions: 31.25"W x 18"D x 9"H; Basin Dimensions: 29.25"W x 16"D Faucet Requires 20" Clearance Height Minimum 33" Sink Base-- Faucet Behind Sink Basin Minimum 39" Sink Base-- Faucet on Left/Right of Sink Basin
SINK-15	15" Standard Sink and Faucet
	201, 18G Stainless Steel, Drop-In Sink Installation, Brushed Satin Finish Sink Basin, Brushed Nickel Finish Faucet Overall Dimensions: 15"W x 15"D x 5.5"H; Basin Dimensions: 13"W x 11.0625"D Minimum 18" Wide Base
WTP	On Demand Water System
	12 Volt Pump, Battery Not Included One 5-gal Fresh Water Tank One 5-gal Gray Water Tank

Miscellaneous Accessories



ITEM	WIDTH
4ADALEGS	Set of 4- ADA Compliant Legs, 1.5"-2.5" Tall
	CANNOT Accommodate Toe Kick
TBH	Towel bar Handle
	Towel Bar/Grab Handle for maneuvering units Adds 4 1/4" width to cabinet, 3 3/4" width to overall run

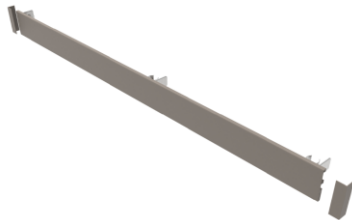


End Panel



Filler Panel

Decorative Fluted Filler Post



Outside & Inside Filler Angle Kit



Toe Kick



Finished Back Panel

Finished Side Panel

ITEM	WIDTH
EP-24D	End Panel, 35"H x 24"D
EP-28D	End Panel, 35"H x 28"D
EP-30D	End Panel, 35"H x 30"D
EP-32D	End Panel, 35"H x 32"D
EP-36D	End Panel, 35"H x 36"D
Includes 2 Count 1/2" Adjustable Feet Provides Countertop Support By Appliance Openings or Corners	
FP-18"H	Overhead Filler Panel, (SPECIFY WIDTH)"W X 18"H
FP-24"H	Overhead Filler Panel, (SPECIFY WIDTH)"W X 24"H
FP-30"H	Overhead Filler Panel, (SPECIFY WIDTH)"W X 30"H
FP-31"H	Base Filler Panel, (SPECIFY WIDTH)"W X 31"H
FP-74"H	Locker Filler Panel, (SPECIFY WIDTH)"W X 74"H
FP-81"H	Locker Filler Panel, (SPECIFY WIDTH)"W X 81"H
1/2" Minimum Width 6" Maximum width	
FAK-30D	Filler Angle Kit, 30 Degrees
FAK-45D	Filler Angle Kit, 45 Degrees
Kit Includes: 2 Angle Pieces & 2 Finished Back Panels (5.1875" W for 30 Degree & 9.3125"W for 45 Degree) Does Not Provide Countertop Support	
DFP-31.5"H-19	Fluted Filler Posts, 3"W x 3"D x 31.5"H
DFP-34"H-19	Fluted Filler Posts, 3"W x 3"D x 34"H
Ships with Adjustable Sleeve 31.5"H for ADA Legs, 34"H for Standard 4" Adjustable Legs	
17TK-96W	Toe Kick, 8' Powder Coated Aluminum Panel
Clips onto 4" Adjustable Legs Cut to size at installation CANNOT be used with ADA Legs	
FBP-1231	Finished Back Panel, 12" W x 31" H
FBP-1531	Finished Back Panel, 15" W x 31" H
FBP-1831	Finished Back Panel, 18" W x 31" H
FBP-2131	Finished Back Panel, 21" W x 31" H
FBP-2431	Finished Back Panel, 24" W x 31" H
FBP-2731	Finished Back Panel, 27" W x 31" H
FBP-3031	Finished Back Panel, 30" W x 31" H
FBP-3331	Finished Back Panel, 33" W x 31" H
FBP-3631	Finished Back Panel, 36" W x 31" H
FBP-3931	Finished Back Panel, 39" W x 31" H
FBP-4231	Finished Back Panel, 42" W x 31" H
FBP-4531	Finished Back Panel, 45" W x 31" H
FBP-4831	Finished Back Panel, 48" W x 31" H
an Island Adds 1" To Overall Cabinet Depth	
FSP-2431	24"D x 31" H
Applied to Exposed Side of Cabinet for Finished Look	

POINT OF SALES MATERIAL

Marketing Material

ITEM	DESCRIPTION
CSR-GAR-E	All Color Samples for Garage Elite on Ring, 1.75" X 3.75"
CSR-XXX	Single Color Sample, 1.75" X 3.75," (SPECIFY COLOR)
POS-STICKER-WINDOW	Transparent Window Sticker, 1" x 6"
POS-LOGOHANGER-XXX	Circle Logo Wall Hanger, 20.25" x 18.5," (SPECIFY COLOR)
BROCHURE-19Garage	2019 Outdoor Kitchen Brochure, (SPECIFY QUANTITY)
Catalog-19	2019 Catalog, Includes Pages for Each Series: Outdoor Kitchen, Garage Grill, Coastal, Caynon, Trailer, (SPECIFY QUANTITY)
GMDDB-121915.5	Mini Garage Drawer / Door Base Sample 12"W x 19"H x 15.5"D

*Offered in Textured Black & Textured Red

*Does Not Include Countertop