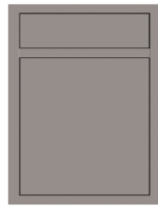


CHALLENGERDESIGNS

+outdoor kitchens

2022
OUTDOOR KITCHEN
CATALOG

OUTDOOR KITCHEN DOOR STYLES



Pan Door



Shaker Door

HANDLE OPTION



9" Stainless Steel Pull



9" Stainless Steel Black Pull

MSRP = .50 OF LIST

3 DRAWER BASE



1 Drawer: 5.5"H
Drawer 2 -3: 9.75"H

ITEM	WIDTH
3ODBC-153528	15"
3ODBC-183528	18"
3ODBC-213528	21"
3ODBC-243528	24"
3ODBC-273528	27"
3ODBC-303528	30"
3ODBC-333528	33"

4 DRAWER BASE



Drawers 1-3: 5.5"H
Drawer 4: 7"H

ITEM	WIDTH
4ODBC-153528	15" W
4ODBC-183528	18" W
4ODBC-213528	21" W
4ODBC-243528	24" W
4ODBC-273528	27" W
4ODBC-303528	30" W
4ODBC-333528	33" W

SINK BASE



False Panel at Top
18" - 24" = 1 Door (LH or RH)
27" - 48" = 2 Door (LH/RH)
No shelf, No drawer

ITEM	WIDTH
OSB-183528	18"
OSB-213528	21"
OSB-243528	24"
OSB-273528	27"
OSB-303528	30"
OSB-333528	33"
OSB-363528	36"
OSB-393528	39"
OSB-423528	42"
OSB-453528	45"
OSB-483528	48"

DRAWER/DOOR BASE



1 Drawer: 5.5"H
1 Full Width Adj Shelf
12" - 24" = 1 Door (LH or RH)
27" - 48" = 2 Door (LH/RH)

ITEM	WIDTH
OSDDB-153528	15"
OSDDB-183528	18"
OSDDB-213528	21"
OSDDB-243528	24"
OSDDB-273528	27"
OSDDB-303528	30"
OSDDB-333528	33"
OSDDB-363528	36" (2 drawers)
OSDDB-393528	39" (2 drawers)
OSDDB-423528	42" (2 drawers)
OSDDB-453528	45" (2 drawers)
OSDDB-483528	48" (2 drawers)

DOOR BASE



1 Full Width Adj Shelf
 12" - 24" = 1 Door (LH or RH)
 27" - 54" = 2 Door (LH/RH)

ITEM	WIDTH
ODB-123528	12"
ODB-153528	15"
ODB-183528	18"
ODB-213528	21"
ODB-243528	24"
ODB-273528	27"
ODB-303528	30"
ODB-333528	33"
ODB-363528	36"
ODB-393528	39"
ODB-423528	42"
ODB-453528	45"
ODB-483528	48"
ODB-543528	54"

BUILT IN APPLIANCE BASE



ITEM	WIDTH
BIAB-303528	30"
BIAB-363528	36"
BIAB-393528	39"
BIAB-423528	42"

INTERNAL SLIDE OUT/DOOR BASE



2 Internal Non Adjustable Slide Outs (1 Top Middle, 1 Floor Mount)
 1 Door (LH or RH)

ITEM	WIDTH
OISDB-153528	15"
OISDB-183528	18"
OISDB-213528	21"
OISDB-243528	24"

INSIDE CORNER BASE



1 Door (LH or RH)
 1 Full Width Adj Shelf
 Door Width = 13.75"

CANNOT be at End of Cabinet Run or Beside Opening

ITEM	WIDTH
OICCB-403528	40"

BLIND BASE



1 Door (LH or RH)
 1 Full Width Adj Shelf
 3" Filler panel recommended for door clearance

ITEM	WIDTH
OBBC-483528	48"

BLIND BASE w/ REAR ACCESS



ITEM	WIDTH
OBB CRA-483528	48"

2- Door (LH or RH)
 1 Full Width Adj Shelf
 3" Filler panel recommended for door clearance

PULL OUT PROPANE BASE



ITEM	WIDTH
OPC-213528	21"

Vented
 1 Drawer: 5.5"H
 Slide Out Tray for LP Tank

DROP -IN PROPANE BASE



ITEM	WIDTH
ODPC-183528	18"
ODPC-243528	24"

Vented
 1 Drawer: 5.5"H, 1 Door (LH or RH)
 Laser Cut Hole for LP Tank in Floor

WASTE BIN



ITEM	WIDTH
OWBC-183528	18"
OWBC-213528	21"
OWBC-243528	24"

1 Drawer: 5.5" H
 Slide Out Waste Bin Tray
 18" Single Waste Bin., 21" & 24" Double Waste Bin

OPEN SHELF



ITEM	WIDTH
OOSU-243528	24"

CANNOT be used
 with an Outdoor Island Base

OPEN STORAGE



ITEM	WIDTH
OOCU-243528	24"

1 Adjustable Shelf
 Powder Coat Finished Interior

GAS GRILL BASE - DEEP CUT



2 Door (LH/RH)

Vented in Floor and Back Panel

Custom Appliance Skirt at Top: 16" Tall

Does not Accommodate a LP Tank

ITEM	WIDTH
OGGBD-363528	36"
OGGBD-393528	39"
OGGBD-423528	42"
OGGBD-453528	45"
OGGBD-483529	48"

GAS GRILL / SIDE BURNER BASE



Appliance Skirt: 12" Tall

18" - 27" - Side Burner

30" - 66"- Gas Grill Base

12" - 24" = 1 Door (LH or RH)

27" - 48" = 2 Door (LH/RH)

51" - 54" = 3 Door (LH/RH/RH)

57" - 66" = 4 Door (LH/RH/LH/RH)

Vented in Floor and Back Panel

Does not Accommodate a LP Tank

ITEM	WIDTH
OGGB-183528	18"
OGGB-213528	21"
OGGB-243528	24"
OGGB-273528	27"
OGGB-303528	30"
OGGB-333528	33"
OGGB-363528	36"
OGGB-393528	39"
OGGB-423528	42"
OGGB-453528	45"
OGGB-483528	48"
OGGB-513528	51"
OGGB-543528	54"
OGGB-573528	57"
OGGB-603528	60"
OGGB-633528	63"
OGGB-663528	66"

GAS GRILL BASE w/ WARMING DRAWER



Custom Appliance Skirt at Top: 12" Tall

Custom False Panel in Bottom Front for Warming Drawer

Vented in Floor and Back Panel

Does not Accommodate a LP Tank

ITEM	WIDTH
OGGWDB-363528	36"
OGGWDB-423528	42"
OGGWDB-483528	48"

MEMPHIS CONTROL PANEL BASE



False Panel at Top

Offered as Left Hinge ONLY, Install on Left of Grill Base

Does NOT include Control Panel Box

ITEM	WIDTH
OMCB-183528L	18"

DEEP CUT GRILL BASE w/DOOR & DRW



Appliance Skirt: 12" Tall

Drawer 1 & 2: 7.2" H

1 Door (RH ONLY) 15.69" W x 16" H

Vented in Back Panel

Does not Accommodate a LP Tank

ITEM	WIDTH
ODDGGB-363528	36"
ODDGGB-393528	NEW!
ODDGGB-423528	42"
ODDGGB-453528	45"
ODDGGB-483528	48"

EVO GRILL BASE



2 Door (LH/RH)

Does not Accommodate a LP Tank

ITEM

OEGB-393534

WIDTH

39" (34" Deep)

****FOR EVO 30G ONLY****

POWER BURNER BASE



Custom Appliance Shelf Height/Width

1 Drawer: 10" H

CANNOT be at End of Cabinet Run or Beside Opening

ITEM

OPBB-243528

WIDTH

24"

OPBB-273529

27"

OPBB-303528

30"

OPBB-363528

36"

PBCOVER-24SS

24" Power Burner Cover, Stainless Steel

PBCOVER-27SS

27" Power Burner Cover, Stainless Steel

PBCOVER-30SS

30" Power Burner Cover, Stainless Steel

PBCOVER-36SS

36" Power Burner Cover, Stainless Steel

PBCOVER-24AL

24" Power Burner Cover, Aluminum

PBCOVER-27AL

27" Power Burner Cover, Aluminum

PBCOVER-30AL

30" Power Burner Cover, Aluminum

PBCOVER-36AL

36" Power Burner Cover, Aluminum

CERAMIC GRILL BASE



Shelf Height Adjusts to Grill Brand/Model

24" - 1 Door (LH or RH),

30" & 33" - 2 Door (LH/RH)

24"W - Med. or LG. Grill, 30" & 33"W - LG or XL Grill

28"D for Med or LG Grill, 30"D for LG or XL Grill

ITEM

OCGC-243528

WIDTH

24"

OCGC-303528

30"

OCGC-243530

24" (30" deep)

OCGC-303530

30" (30" deep)

OCGC-303532

30" (32" deep)

OCGC-303536

30" (36" deep)

OCGC-333530

33" (30" deep)

Please Provide Appliance(s) Brand & Model

Island is recommended. If unit is to remain stationary against a wall, the cabinet must be 28" Deep for a Medium Grill, 32" Deep for a Large Grill, and 36" Deep for an Extra Large Grill. (Kamado Joe II & III are exempt from these specifications due to Hinge Size & Grill Height)

CORNER CERAMIC GRILL BASE



Shelf Height Adjusts to Grill Brand/Model

1 Door (LH or RH) Width = 13.75"

Med., LG., or XL Grill

CANNOT be at End of Cabinet Run or Beside Opening

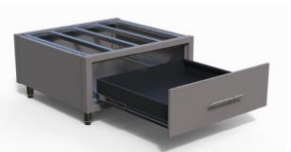
ITEM

OICGC-403528

WIDTH

40"

CERAMIC GRILL STAND



1 Drawer: 10" H

ITEM

OCGS-301728

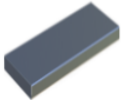
DIMENSIONS

30"W X 17" H

Please Provide Appliance(s) Brand & Model

Island is recommended. If unit is to remain stationary against a wall, the cabinet must be offset to accommodate certain Grill Brands/Models.

ADDITIONAL SHELF FOR BASE



60 lb weight rating
Not Available for All Base Cabinets

ITEM	WIDTH
BLAS-1828	18"
BLAS-2128	21"
BLAS-2428	24"
BLAS-2728	27"
BLAS-3028	30"

OUTDOOR ISLAND BASE (OIB)



Available with Legs 4"H Adjustable or 3"H Casters (ADA legs n/a)
12"-71" = 4 Casters/Legs, 72"-96" = 6 Casters/ Legs
CANNOT be used with Free Standing Appliances (ex: refer)
Color Matches Cabinet Frame
Used for One Piece Build (Comparable to Coastals)

ITEM	WIDTH
OIB-12-48" x 24.875"D	12" - 48"
OIB-49-72 x 24.875"D	49" - 72"
OIB-73-96 x 24.875"D	73" - 96"

THIS ALLOWS FOR A ONE PIECE - FULLY ENSEMBLED UNIT

3.125" Shallower than cabinets

Example 28"D cabinet- 3.125"= 24.875"D Outdoor Island Base

Island Base with Casters adds 1 7/8" to Cabinet Height

Island Base with Legs adds 1 9/16" to Cabinet Height

78" LOCKER



1 Door (LH or RH)
1 Full Width Adjustable Shelves
1 Full Width Adjustable Shelf with Coat Hanger
Must be Attached to a Wall
Cannot be used with an Outdoor Island Base

LOCKERS & OVERHEAD CABINETS

ITEM	WIDTH
OCL-187829.5	18"
OCL-217829.5	21"
OCL-247829.5	24"
OCL-277829.5	27"
OCL-307829.5	30"

84" LOCKER



1 Door (LH or RH)
1 Full Width Adjustable Shelves
1 Full Width Adjustable Shelf with Coat Hanger
Must be Attached to a Wall
Cannot be used with an Outdoor Island Base

ITEM	WIDTH
OCL-188429.5	18"
OCL-218429.5	21"
OCL-248429.5	24"
OCL-278429.5	27"
OCL-308429.5	30"

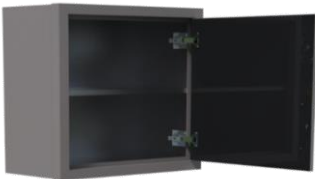
18" OVERHEAD



12" - 24" = 1 Door (LH or RH)
27" - 36" = 2 Door (LH/RH)

ITEM	WIDTH
KOC-121812	12"
KOC-151812	15"
KOC-181812	18"
KOC-211812	21"
KOC-241812	24"
KOC-271812	27"
KOC-301812	30"
KOC-331812	33"
KOC-361812	36"

24" OVERHEAD



1 Full Width Adj Shelf
12" - 24" = 1 Door (LH or RH)
27" - 36" = 2 Door (LH/RH)

ITEM	WIDTH
KOC-122412	12"
KOC-152412	15"
KOC-182412	18"
KOC-212412	21"
KOC-242412	24"
KOC-272412	27"
KOC-302412	30"
KOC-332412	33"
KOC-362412	36"

30" OVERHEAD



1 Full Width Adj Shelf
 12" - 24" = 1 Door (LH or RH)
 27" - 36" = 2 Door (LH/RH)

ITEM	WIDTH
KOC-123012	12"
KOC-153012	15"
KOC-183012	18"
KOC-213012	21"
KOC-243012	24"
KOC-273012	27"
KOC-303012	30"
KOC-333012	33"
KOC-363012	36"

36" OVERHEAD



2 Full Width Adj Shelves
 12" - 24" = 1 Door (LH or RH)
 27" - 36" = 2 Door (LH/RH)

ITEM	WIDTH
KOC-123612	12"
KOC-153612	15"
KOC-183612	18"
KOC-213612	21"
KOC-243612	24"
KOC-273612	27"
KOC-303612	30"
KOC-333612	33"
KOC-363612	36"

NEED TO PRICE W 2 SHELVES

BLIND CORNER OVERHEAD



18" High -No Shelf
 24" & 30" - 1 Full Width Adj Shelf
 All Cabinets 1 Door (LH or RH)

ITEM	DIMENSIONS
OOBC-361812	36" W x 18" H
OOBC-362412	36" W x 24" H
OOBC-363012	36" W x 30" H
OOBC-363612	36" W x 36" H

INSIDE CORNER OVERHEAD



18" High -No Shelf
 24" & 30" - 1 Shelf
 All Cabinets 1 Door (LH or RH)
 CANNOT be at End of Cabinet Run or Beside Opening
 3" Filler panel recommended for door clearance

ITEM	DIMENSIONS
KOIC-241812	24" W x 18" H
KOIC-242412	24" W x 24" H
KOIC-243012	24" W x 30" H
KOIC-243612	24" W x 36" H

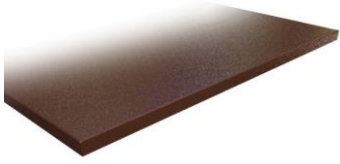
ADDITIONAL SHELF FOR OVERHEAD



ITEM	WIDTH
OAS-12	12"
OAS-15	15"
OAS-18	18"
OAS-21	21"
OAS-24	24"
OAS-27	27"
OAS-30	30"
OAS-33	33"
OAS-36	36"

COUNTERTOP OPTIONS

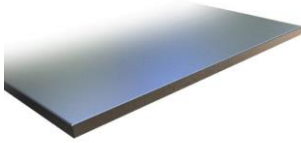
ALUMINUM COUNTERTOPS



ALL PRICING IS COST PER LINEAL INCH
 .090 Aluminum Powdercoated
 Top overhandg is 1/2" on all sides; unless against wall

ITEM	DESCRIPTION
ACT- 28.5	Countertop, 28.5" D x 1.25" Thick
ACT- 29	Countertop, 29" D x 1.25" Thick
ACT-30.5	Countertop, 30.5"D x 1.25" Thick
ACT- 31	Countertop, 31" D x 1.25" Thick
ACT-32.5	Countertop, 32.5"D x 1.25" Thick
ACT- 33	Countertop, 33"D x 1.25" Thick
ACT- 36.5	Countertop, 36.5"D x 1.25" Thick
ACT- 37	Countertop, 37" D x 1.25" Thick
ABS-4	BACKSPLASH, 4"H x 1"Thick
ABT-16	BAR TOP WITH RISERS, 16"D x 1.25"Thick Bar Top Corner Support Measurements: 8" W x 8"D x 5" H; Center Support Measurements: 12" W x 5" H Center Supports are needed for every 5' of Bar Top Countertop Overlap of Bar Top is 9", Edge Overhang of 7"

STAINLESS STEEL COUNTERTOPS



ALL PRICING IS COST PER LINEAL INCH
 16 Gauge food grade Stainless Steel
 Top overhandg is 1/2" on all sides; unless against wall

ITEM	DESCRIPTION
SST-28.5	Countertop, 28"D x 1.25" Thick
SST-29	Countertop, 29" D x 1.25" Thick
SST-30.5	Countertop, 30.5"D x 1.25" Thick
SST-31	Countertop, 31"D x 1.25" Thick
SST-32.5	Countertop, 32.5"D x 1.25" Thick
SST-33	Countertop, 33"D x 1.25" Thick
SST-36.5	Countertop, 36.5"D x 1.25" Thick
SST-37	Countertop, 37"D x 1.25" Thick
SSBS -4	BACKSPLASH, 4"H x 1"Thick
SSBT-16	BAR TOP WITH RISERS, 16"D x 1.25"Thick

ADD-ONS | OPTIONS

PREMIUM 30" SINK



ITEM	DESCRIPTION
SINK-30	30" Premium Sink and Sprayer Spring Faucet 304, 18G Stainless Steel, Undermount Sink Installation Brushed Satin Finish Sink Basin, Brushed Nickel Finished Spring Faucet Overall Dimensions: 31.25"W x 18"D x 9"H; Basin Dimensions: 29.25"W x 16"D Faucet Requires 20" Clearance Height Minimum 39" Sink Base-- Faucet on Left/Right of Sink Basin

STANDARD SINK



ITEM	DESCRIPTION
SINK-15	15" Standard Sink and Faucet 201, 18G Stainless Steel, Undermount Installation Brushed Satin Finish Sink Basin, Brushed Nickel Finish Faucet Overall Dimensions: 15"W x 15"D x 5.5"H; Basin Dimensions: 13"W x 11.0625"D

ON DEMAND WATER SYSTEM

ITEM	DESCRIPTION
WTP	On Demand Water System 12 Volt Pump, Battery Not Included One 5-gal Fresh Water Tank One 5-gal Gray Water Tank

LEG OPTION

ITEM	DESCRIPTION
4ADALEGS	Set of 4- ADA Compliant Legs, 1.5"-2.5" Tall Cannot accommodate Toe Kick

TOWEL BAR / GRAB HANDLE

ITEM	DESCRIPTION
TBH	Towel bar Handle Towel Bar/Grab Handle for maneuvering units Adds 4 1/4" width to cabinet, 3 3/4" width to overall run

ADD-ONS | OPTIONS



ITEM	DESCRIPTION
EP-28D	End Panel, 35"H x 28"D
EP-30D	End Panel, 35"H x 30"D
EP-32D	End Panel, 35"H x 32"D
EP-36D	End Panel, 35"H x 36"D
	Includes 2 Count 1/2" Adjustable Feet Provides Countertop Support By Appliance Openings or Corners
FP-13"H	Ceramic Grill Stand Filler Panel, (SPECIFY WIDTH)"W X 13"H
FP-18"H	Overhead Filler Panel, (SPECIFY WIDTH)"W X 18"H
FP-24"H	Overhead Filler Panel, (SPECIFY WIDTH)"W X 24"H
FP-30"H	Overhead Filler Panel, (SPECIFY WIDTH)"W X 30"H
FP-31"H	Base Filler Panel, (SPECIFY WIDTH)"W X 31"H
FP-74"H	Locker Filler Panel, (SPECIFY WIDTH)"W X 74"H
FP-80"H	Locker Filler Panel, (SPECIFY WIDTH)"W X 80"H
	1" Minimum Width 6" Maximum width
FAK-30D	Filler Angle Kit, 30 Degrees
FAK-45D	Filler Angle Kit, 45 Degrees
	Kit Includes: 2 Angle Pieces & 2 Finished Back Panels (5.1875" W for 30 Degree & 9.3125"W for 45 Degree) Does Not Provide Countertop Support
FBP- 31"H	Framed, Finished Back Panel, (SPECIFY WIDTH)"W X 31"H
	6" Minimum Width 48" Maximum width Commonly used between Cabinets to Create an Appliance Opening
DFP-31.5"H-19	Fluted Filler Posts, 3"W x 3"D x 31.5"H
DFP-34"H-19	Fluted Filler Posts, 3"W x 3"D x 34"H
	Ships with Adjustable Sleeve 31.5"H for ADA Legs, 35"H for Standard 4" Adjustable Legs
17TK-94W	Toe Kick, 94" Powder Coated Aluminum
	Clips onto 4" Adjustable Legs Cut to size at installation CANNOT be used with ADA Legs
TKE-2	1"x 2" x 94" Toe Kick Extension with Qty (2) -8" corners
TKE-3	1"x 3" x 94" Toe Kick Extension with Qty (2) -8" corners
TKE-4	1"x 4" x 94" Toe Kick Extension with Qty (2) -8" corners

Below accessories, shipped loose to be installed on site

GRATEHANGER	Grate Hanger, Stainless Steel
TOOLHOOK	Tool/Utensil Hook, Textured Black
TOWELHOLDER	Paper Towel Holder, Textured Black (21" or 24"w cabinets only)