

CHALLENGERDESIGNS

*+garage*

2023 LIST PRICING  
&  
STANDARDS

EFFECTIVE FEBRUARY 20, 2023

## CLASSIC

- > Anodized Frame
- > Smooth Finish Doors, & Panels
- > Anodized Extruded Pulls

## ELITE

- > Powder Coated Frame, Doors,& Panels
- > Stainless Steel Pulls OR Powder Coated Extruded Pulls
- > Pan Door Construction
- > Shaker Door Option available

ELITE SHAKER GLASS  
INSERT PANELS  
AVAILABLE AT 5%  
UPCHARGE

MSRP = .50 of LIST

### 3-Drawer Base



ITEM	WIDTH
3DBC-183524	18"
3DBC-213524	21"
3DBC-243524	24"
3DBC-273524	27"
3DBC-303524	30"
3DBC-333524	33"
3DBC-363524	36"
3DBC-183518	18"
3DBC-213518	21"
3DBC-243518	24"
3DBC-273518	27"
3DBC-303518	30"
3DBC-333518	33"
3DBC-363518	36"

### 5-Drawer Base



ITEM	WIDTH
5DBC-183524	18"
5DBC-213524	21"
5DBC-243524	24"
5DBC-273524	27"
5DBC-303524	30"
5DBC-333524	33"
5DBC-363524	36"
5DBC-183518	18"
5DBC-213518	21"
5DBC-243518	24"
5DBC-273518	27"
5DBC-303518	30"
5DBC-333518	33"
5DBC-363518	36"

### 7-Drawer Base



ITEM	WIDTH
7DBC-183524	18"
7DBC-213524	21"
7DBC-243524	24"
7DBC-273524	27"
7DBC-303524	30"
7DBC-333524	33"
7DBC-363524	36"
7DBC-183518	18"
7DBC-213518	21"
7DBC-243518	24"
7DBC-273518	27"
7DBC-303518	30"
7DBC-333518	33"
7DBC-363518	36"

**Sink Base**



False Panel at Top  
 12" - 24" = 1 Door (LH or RH)  
 27" - 48" = 2 Door (LH/RH)

ITEM	WIDTH
GSB-183524	18"
GSB-213524	21"
GSB-243524	24"
GSB-273524	27"
GSB-303524	30"
GSB- 333524	33"
GSB-363524	36"
GSB- 393524	39"
GSB- 423524	42"
GSB- 453524	45"
GSB-483524	48"
GSB-183518	18"
GSB-213518	21"
GSB-243518	24"
GSB-273518	27"
GSB-303518	30"
GSB- 333518	33"
GSB-363518	36"
GSB- 393518	39"
GSB- 423518	42"
GSB- 453518	45"
GSB-483518	48"

**1-Drawer Base Cabinet (17" high)**



ITEM	WIDTH
1DBC-241724	24"
1DBC-271724	27"
1DBC-301724	30"
1DBC-241718	24"
1DBC-271718	27"
1DBC-301718	30"

**Single Drawer Door Base**



1 Drawer: 5"H  
 1 Full Width Shelf  
 12" - 24" = 1 Door (LH or RH)  
 27" - 36" = 2 Door (LH/RH)


ITEM	WIDTH
GSDDB-153524	15"
GSDDB-183524	18"
GSDDB-213524	21"
GSDDB-243524	24"
GSDDB-273524	27"
GSDDB-303524	30"
GSDDB- 333524	33"
GSDDB-363524	36"
GSDDB-153518	15"
GSDDB-183518	18"
GSDDB-213518	21"
GSDDB-243518	24"
GSDDB-273518	27"
GSDDB-303518	30"
GSDDB- 333518	33"
GSDDB-363518	36"


**Door Base**

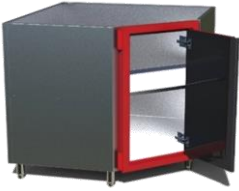



1 Full Width Shelf  
 12" - 24" = 1 Door (LH or RH)  
 27" - 36" = 2 Door (LH/RH)


ITEM	WIDTH
GDB-123524	12"
GDB-153524	15"
GDB-183524	18"
GDB-213524	21"
GDB-243524	24"
GDB-273524	27"
GDB-303524	30"
GDB-333524	33"
GDB-363524	36"
GDB-123518	12"
GDB-153518	15"
GDB-183518	18"
GDB-213518	21"
GDB-243518	24"
GDB-273518	27"
GDB-303518	30"
GDB-333518	33"
GDB-363518	36"

Door Base - Internal Slide Out Shelves	ITEM	WIDTH
 <p>2 Internal Slide Outs (1 Top Middle, 1 Floor Mount)            15"-24"= 1 Door (LH or RH)            27" &amp; 30"= 2 Door (LH/RH)</p>	GISDB-153524	15"
	GISDB-183524	18"
	GISDB-213524	21"
	GISDB-243524	24"
	GISDB-273524	27"
	GISDB-303524	30"

Knee Hole - Pencil Drawer	ITEM	WIDTH
 <p>7.25" High Drawer            24" - 36" = 1 Drawer   42" - 48" = 2 Drawer</p>	GKND-247.2524	24"
	GKND-277.2524	27"
	GKND-307.2524	30"
	GKND-337.2524	33"
	GKND-367.2524	36"
	GKND-427.2524	42"
	GKND-487.2524	48"
	GKND-247.2518	24"
	GKND-277.2518	27"
	GKND-307.2518	30"
	GKND-337.2518	33"
	GKND-367.2518	36"
	GKND-427.2518	42"
	GKND-487.2518	48"

Inside Corner Base	ITEM	WIDTH
 <p>1 Door (LH or RH)            1 Full Width Shelf            Door Width = 13 3/4"</p> <p>CANNOT be at End of Cabinet Run or Beside Opening</p>	GICB-363524	36"

Blind Base	ITEM	WIDTH
 <p>1 Door (LH or RH)            1 Full Width Shelf</p>	GBBC-483524	48"
	GBBC-483518	48"

Bolt Bin Base	ITEM	WIDTH
 <p>1 Drawer (Left or Right Access)            25 Plastic Bolt Bins</p>	GBB-123524-RA	12"
	GBB-123524-LA	12"

### Waste Basket Base



1 Drawer: 5" H  
Slide Out Waste Bin Tray  
18" Single Waste Bin, 24" Double Waste Bin

ITEM	WIDTH
GWB-183524	18"
GWB-243524	24"
GWB-183518	18"
GWB-243518	24"

### 78" Locker - 1 Door



1 Door (LH or RH)  
2 Adjustable Shelves  
1 Full Width Shelf with attached Coat Hanger

ITEM	WIDTH
GCL-187825.5	18"
GCL-217825.5	21"
GCL-247825.5	24"
GCL-277825.5	27"
GCL-307825.5	30"
GCL-187819.5	18"
GCL-217819.5	21"
GCL-247819.5	24"
GCL-277819.5	27"
GCL-307819.5	30"

### 84" Locker - 1 Door



1 Door (LH or RH)  
2 Full Width Adjustable Shelves  
1 Full Width Shelf with attached Coat Hanger

ITEM	WIDTH
GCL-188425.5	18"
GCL-218425.5	21"
GCL-248425.5	24"
GCL-278425.5	27"
GCL-308425.5	30"
GCL-188419.5	18"
GCL-218419.5	21"
GCL-248419.5	24"
GCL-278419.5	27"
GCL-308419.5	30"

### Locker Combination

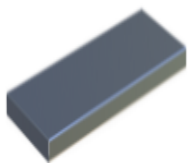


1 Full Width fixed hanging rod at top &  
2 Adjustable Shelves,  
(1 top and 1 at bottom)

ITEM	WIDTH
GCLC-248425.5	24"
GCLC-368425.5	36" (Double Door)
GCLC-248419.5	24"
GCLC-368419.5	36" (Double Door)

### BASE & LOCKER OPTIONS

#### Additional Base & Locker Shelves



ITEM	WIDTH
BLAS-1224	12"
BLAS-1524	15"
BLAS-1824	18"
BLAS-2124	21"
BLAS-2424	24"
BLAS-2724	27"
BLAS-3024	30"
BLAS-3324	33"
BLAS-3624	36"

Double Rolling Tool Chest	ITEM	WIDTH
POWDERCOATED TOP	GTC-58.2538.525	58.25"
HARD MAPLE BUTCHER BLOCK TOP	GTC-58.2538.525	58.25"



Two - 5 Drawer Tool Boxes (Either End)  
 One - Wastebin (Center)  
 Four Locking Swivel Casters  
 Towel/Grab Bar (Right)

Mobile Island Base	ITEM	WIDTH
	OIB-24-48" x 21.875"D	24" - 48"
	OIB-49-72 x 21.875"D	49" - 72"
	OIB-73-96 x 21.875"D	73" - 96"



Available with Legs 4"H Adjustable or 3"H Casters  
 24"-71" = 4 Casters/Legs, 72"-96" = 6 Casters/ Legs  
 CANNOT be used with Stand-Alone Appliances  
 Color Matches Cabinet Frame  
 Used for One Piece Build (Comparable to Tool Chest)  
 \*Cabs require back panel

Island Base with Casters adds 5 7/8" to Cabinet Height  
 Island Base with Legs adds 5 9/16" to Cabinet Height

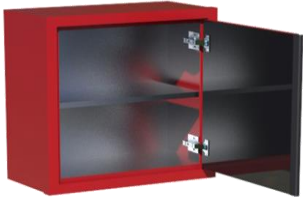
**ALL OVERHEADS ARE 12" DEEP**

18" Overhead	ITEM	WIDTH
	GOC-121812	12"
	GOC-151812	15"
	GOC-181812	18"
	GOC-211812	21"
	GOC-241812	24"
	GOC-271812	27"
	GOC-301812	30"
	GOC-331812	33"
	GOC-361812	36"



No Shelf  
 12" - 24" = 1 Door  
 27" - 36" = 2 Door

24" Overhead	ITEM	WIDTH
	GOC-122412	12"
	GOC-152412	15"
	GOC-182412	18"
	GOC-212412	21"
	GOC-242412	24"
	GOC-272412	27"
	GOC-302412	30"
	GOC-332412	33"
	GOC-362412	36"



1 Full Length Adjustable Shelf  
 12" - 24" = 1 Door  
 27" - 36" = 2 Door

30" Overhead	ITEM	WIDTH
	GOC-123012	12"
	GOC-153012	15"
	GOC-183012	18"
	GOC-213012	21"
	GOC-243012	24"
	GOC-273012	27"
	GOC-303012	30"
	GOC-333012	33"
	GOC-363012	36"



1 Full Length Adjustable Shelf  
 12" - 24" = 1 Door  
 27" - 36" = 2 Door

### 36" OVERHEAD



2 Full Width Adj Shelves  
 12" - 24" = 1 Door (LH or RH)  
 27" - 36" = 2 Door (LH/RH)

ITEM	WIDTH
KOC-123612	12"
KOC-153612	15"
KOC-183612	18"
KOC-213612	21"
KOC-243612	24"
KOC-273612	27"
KOC-303612	30"
KOC-333612	33"
KOC-363612	36"

### Overhead Blind Corner



18" High -No Shelf  
 24" & 30" - 1 Shelf  
 All Cabinets 1 Door

ITEM	WIDTH
GOBC-361812	36" W x 18" H
GOBC-362412	36" W x 24" H
GOBC-363012	36" W x 30" H

### Overhead inside Corner



18" High -No Shelf  
 24" & 30" - 1 Shelf  
 All Cabinets 1 Door

ITEM	WIDTH
GOIC-241812	24 W x 18" H
GOIC-242412	24" W x 24" H
GOIC-243012	24" W x 30" H

### OVERHEAD OPTIONS

#### Additional Overhead Shelves



ITEM	WIDTH
OAS-12	12"
OAS-15	15"
OAS-18	18"
OAS-21	21"
OAS-24	24"
OAS-27	27"
OAS-30	30"
OAS-33	33"
OAS-36	36"

### GARAGE COUNTERTOPS

#### Aluminum Countertops & Options



ITEM	DIMENSIONS
ACT- 24.5	Countertop, 24.5" D x 1.25" Thick
ACT- 25.5	Countertop, 25.5" D x 1.25" Thick
ABS-4	Backsplash, 4" H x 1" Thick
ABT-16	Bar Top with Risers, 16"Dx1.25" Thick

.090 Aluminum, Powder Coated

ALL Pricing is Cost Per Lineal Inch

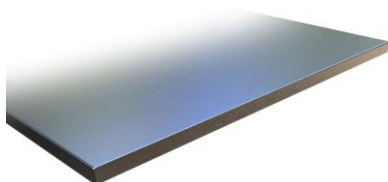
Countertop Overhang is 1/2" on all sides, UNLESS against wall

Bar Top Corner Support Measurements: 8"Wx8"Dx5"H; Center Support Measurements: 12"Wx5"H

Center Supports are needed for every 5' of bar top

Countertop Overlap of Bar Top is 9", Edge Overhang of 7"

#### Stainless Steel Countertops & Options



ITEM	WIDTH
SST-24.5	25" D x 1.25" Thick
SST-25	25" D x 1.25" Thick
SSBS-4	4" High x 1" Thick
SSBT-16	Bar Top with Risers, 16"Dx1.25" Thick

16G, Food Grade Stainless Steel

ALL Pricing is Cost Per Lineal Inch

Countertop Overhang is 1/2" on all sides, UNLESS against wall

Bar Top Corner Support Measurements: 8"Wx8"Dx5"H; Center Support Measurements: 12"Wx5"H

Center Supports are needed for every 5' of Bar Top

Countertop Overlap of Bar Top is 9", Edge Overhang of 7"

### Butcher Block Countertops & Options

ITEM	WIDTH
BBT-24.5	25" D x 1.5" Thick
BBT-25	25" D x 1.5" Thick
BBS-4	4" High x 1 1/2" Thick

Clear Coated Maple Butcher Block  
 ALL Pricing is Cost Per Lineal Inch  
 Countertop Overhang is 1/2" on all sides, UNLESS against wall  
 \*\*\*SINKS NOT AVAILABLE IN BUTCHER BLOCK TOP

### GARAGE ADD ON OPTIONS

#### Sink & Plumbing Options



ITEM	WIDTH
SINK-30	30" Premium Sink and Sprayer Spring Faucet 304, 18G Stainless Steel, Undermount Sink Installation Brushed Satin Finish Sink Basin, Brushed Nickel Finished Spring Faucet Overall Dimensions: 31.25"W x 18"D x 9"H; Basin Dimensions: 29.25"W x 16"D Faucet Requires 20" Clearance Height   Minimum 33" Sink Base-- Faucet Behind Sink Basin Minimum 39" Sink Base-- Faucet on Left/Right of Sink Basin
SINK-15	15" Standard Sink and Faucet 201, 18G Stainless Steel, Undermount Sink Installation, Brushed Satin Finish Sink Basin, Brushed Nickel Finish Faucet Overall Dimensions: 15"W x 15"D x 5.5"H; Basin Dimensions: 13"W x 11.0625"D Minimum 18" Wide Base
WTP	On Demand Water System 12 Volt Pump, Battery Not Included One 5-gal Fresh Water Tank   One 5-gal Gray Water Tank

#### Miscellaneous Accessories



ITEM	WIDTH
4ADALEGS	Set of 4- ADA Compliant Legs, 1.5"-2.5" Tall CANNOT Accommodate Toe Kick
TBH	Towel bar Handle Towel Bar/Grab Handle for maneuvering units   Adds 4 1/4" width to cabinet, 3 3/4" width to overall run

#### Panel & Filler Options



ITEM	WIDTH
EP-24D	End Panel, 35"H x 24"D
EP-28D	End Panel, 35"H x 28"D
EP-30D	End Panel, 35"H x 30"D
EP-32D	End Panel, 35"H x 32"D
EP-36D	End Panel, 35"H x 36"D
	Includes 2 Count 1/2" Adjustable Feet Provides Countertop Support By Appliance Openings or Corners
FP-18"H	Overhead Filler Panel, (SPECIFY WIDTH)"W X 18"H
FP-24"H	Overhead Filler Panel, (SPECIFY WIDTH)"W X 24"H
FP-30"H	Overhead Filler Panel, (SPECIFY WIDTH)"W X 30"H
FP-36"H	Overhead Filler Panel, (SPECIFY WIDTH)"W X 36"H
FP-31"H	Base Filler Panel, (SPECIFY WIDTH)"W X 31"H
FP-74"H	Locker Filler Panel, (SPECIFY WIDTH)"W X 74"H
FP-80"H	Locker Filler Panel, (SPECIFY WIDTH)"W X 81"H 1/2" Minimum Width   6" Maximum width
Outside & Inside Filler Angle Kit	FAK-30D Filler Angle Kit, 30 Degrees FAK-45D Filler Angle Kit, 45 Degrees Kit Includes: 2 Angle Pieces & 2 Finished Back Panels

(5.1875" W for 30 Degree &  
 9.3125" W for 45 Degree)  
 Does Not Provide Countertop Support



Fluted Filler Posts	DFP-31.5"H-19	Fluted Filler Posts, 3"W x 3"D x 31.5"H	Ships with Adjustable Sleeve 31.5"H for ADA Legs, 34"H for Standard 4" Adjustable Legs
	DFP-34"H-19	Fluted Filler Posts, 3"W x 3"D x 34"H	

Toe Kick	17TK-94W	Toe Kick, 94" Powder Coated Aluminum Panel	Clips onto 4" Adjustable Legs Cut to size at installation CANNOT be used with ADA Legs

**Panel & Filler Options**



Finished Back Panel

ITEM	WIDTH
FBP-1231	Finished Back Panel, 12" W x 31" H
FBP-1531	Finished Back Panel, 15" W x 31" H
FBP-1831	Finished Back Panel, 18" W x 31" H
FBP-2131	Finished Back Panel, 21" W x 31" H
FBP-2431	Finished Back Panel, 24" W x 31" H
FBP-2731	Finished Back Panel, 27" W x 31" H
FBP-3031	Finished Back Panel, 30" W x 31" H
FBP-3331	Finished Back Panel, 33" W x 31" H
FBP-3631	Finished Back Panel, 36" W x 31" H
FBP-3931	Finished Back Panel, 39" W x 31" H
FBP-4231	Finished Back Panel, 42" W x 31" H
FBP-4531	Finished Back Panel, 45" W x 31" H
FBP-4831	Finished Back Panel, 48" W x 31" H

Commonly used between Cabinets to Create an Appliance Opening OR as a Finished Back on an Island  
Adds 1" To Overall Cabinet Depth

Finished Side Panel	FSP-2431	24"D x 31" H	Applied to Exposed Side of Cabinet for Finished Look
---------------------	----------	--------------	--