

CHALLENGERDESIGNS

*+outdoor kitchens*

# OUTDOOR KITCHEN

2023 PRICING  
&  
STANDARDS

EFFECTIVE FEBRUARY 20, 2023

# CHALLENGER DESIGNS

## DOOR | HANDLE STYLE OPTIONS



Pan Door



Shaker Door



Ribbed Shaker Door

9" Stainless Steel Pull



9" Stainless Steel Black Pull



### 3 DRAWER BASE



1 Drawer: 5.5"H  
Drawer 2 -3: 9.75"H

ITEM	WIDTH
3ODBC-153528	15"
3ODBC-183528	18"
3ODBC-213528	21"
3ODBC-243528	24"
3ODBC-273528	27"
3ODBC-303528	30"
3ODBC-333528	33"

### 4 DRAWER BASE



Drawers 1-3: 5.5"H  
Drawer 4: 7"H

ITEM	WIDTH
4ODBC-153528	15" W
4ODBC-183528	18" W
4ODBC-213528	21" W
4ODBC-243528	24" W
4ODBC-273528	27" W
4ODBC-303528	30" W
4ODBC-333528	33" W

### SINK BASE



False Panel at Top  
18" - 24" = 1 Door (LH or RH)  
27" - 48" = 2 Door (LH/RH)  
No shelf, No drawer

ITEM	WIDTH
OSB-183528	18"
OSB-213528	21"
OSB-243528	24"
OSB-273528	27"
OSB-303528	30"
OSB-333528	33"
OSB-363528	36"
OSB-393528	39"
OSB-423528	42"
OSB-453528	45"
OSB-483528	48"

### APRON (FARMHOUSE) SINK BASE



For Beverage Centers & Apron Sinks

ITEM	WIDTH
OASB-363528	36"
OASB-393528	39"
OASB-423528	42"
OASB-453528	45"
OASB-483528	48"

## ADA SINK BASE



**NEW**

False Panel at Top  
Includes 4 ADA Legs (1 1/2" h)  
Removable panel for plumbing access

ITEM	WIDTH
OSB-363528 ADA	36
OSB-393528 ADA	39
OSB-423528 ADA	42"
OSB-453528 ADA	45"
OSB-483528 ADA	48"

## DRAWER/DOOR BASE



1 Drawer: 5.5"H  
1 Full Width Adj Shelf  
12" - 24" = 1 Door (LH or RH)  
27" - 48" = 2 Door (LH/RH)

ITEM	WIDTH
OSDDB-153528	15"
OSDDB-183528	18"
OSDDB-213528	21"
OSDDB-243528	24"
OSDDB-273528	27"
OSDDB-303528	30"
OSDDB-333528	33"
OSDDB-363528	36" (2 drawers)
OSDDB-393528	39" (2 drawers)
OSDDB-423528	42" (2 drawers)
OSDDB-453528	45" (2 drawers)
OSDDB-483528	48" (2 drawers)

## DOOR BASE



1 Full Width Adj Shelf  
12" - 24" = 1 Door (LH or RH)  
27" - 54" = 2 Door (LH/RH)

ITEM	WIDTH
ODB-123528	12"
ODB-153528	15"
ODB-183528	18"
ODB-213528	21"
ODB-243528	24"
ODB-273528	27"
ODB-303528	30"
ODB-333528	33"
ODB-363528	36"
ODB-393528	39"
ODB-423528	42"
ODB-453528	45"
ODB-483528	48"
ODB-543528	54"
ODB-123512	12"
ODB-153512	15"
ODB-183512	18"
ODB-213512	21"
ODB-243512	24"
ODB-273512	27"
ODB-303512	30"
ODB-333512	33"
ODB-363512	36"
ODB-393512	39"
ODB-423512	42"
ODB-453512	45"
ODB-483512	48"
ODB-543512	54"

## PENISULA BASE



**NEW**

1 Full Width Adj Shelf  
12" - 24" = 1 Door (LH or RH)  
27" - 54" = 2 Door (LH/RH)  
Door Options: 2-RH, 2-LH or 1RH with 1LH

ITEM	WIDTH
OPDB-123528	12"
OPDB-153528	15"
OPDB-183528	18"
OPDB-213528	21"
OPDB-243528	24"
OPDB-273528	27"
OPDB-303528	30"
OPDB-333528	33"
OPDB-363528	36"
OPDB-393528	39"
OPDB-423528	42"
OPDB-453528	45"
OPDB-483528	48"
OPDB-543528	54"

### BUILT IN APPLIANCE BASE



ITEM	WIDTH
BIAB-303528	30"
BIAB-363528	36"
BIAB-393528	39"
BIAB-423528	42"
BIAB-483528	48"

### INTERNAL SLIDE OUT/DOOR BASE



ITEM	WIDTH
OISDB-153528	15"
OISDB-183528	18"
OISDB-213528	21"
OISDB-243528	24"

2 Internal Non Adjustable Slide Outs (1 Top Middle, 1 Floor Mount)  
1 Door (LH or RH)

### INSIDE CORNER BASE



ITEM	WIDTH
OICCB-403528	40"

1 Door (LH or RH)  
1 Full Width Adj Shelf  
Door Width = 13.75"  
CANNOT be at End of Cabinet Run or Beside Opening

### BLIND BASE



ITEM	WIDTH
OBBC-483528	48"

1 Door (LH or RH)  
1 Full Width Adj Shelf  
3" Filler panel recommended for door clearance

### BLIND BASE w/ REAR ACCESS



ITEM	WIDTH
OBBCRA-483528	48"

2- Door (LH or RH)  
1 Full Width Adj Shelf  
3" Filler panel recommended for door clearance

### PULL OUT PROPANE BASE



ITEM	WIDTH
OPC-213528	21"

Vented  
1 Drawer: 5.5"H  
Slide Out Tray for LP Tank (20 lb. only)

**DROP-IN PROPANE BASE**

ITEM	WIDTH
ODPC-183528	18"
ODPC-213528	21"
ODPC-243528	24"



Vented  
 1 Drawer: 5.5"H, 1 Door (LH or RH)  
 Laser Cut Hole for LP Tank (20 lb. only) in Floor

**DROP-IN PROPANE BASE FULL DOOR**

ITEM	WIDTH
ODPFD-183528	18"
ODPFD-213528	21"
ODPFD-243528	24"



Vented  
 r: 5.5"H, 1 Door (LH or RH)  
 Laser Cut Hole for LP Tank (20 & 30 lb.only) in floor

**WASTE BIN**

ITEM	WIDTH
OWBC-153528	15"
OWBC-183528	18"
OWBC-213528	21"
OWBC-243528	24"



1 Drawer: 5.5" H  
 Slide Out Waste Bin Tray  
 15" & 18" Single Waste Bin  
 21" & 24" Double Waste Bin (7 gallon bin)

**OPEN SHELF**

ITEM	WIDTH
OOSU-243528	24"



CANNOT be used  
 with an Outdoor Island Base

**OPEN STORAGE**

ITEM	WIDTH
OOCU-243528	24"



1 Adjustable Shelf  
 Powder Coat Finished Interior  
 Comes with finished sides

**OPEN 3 SHELF STORAGE**

ITEM	WIDTH
OOSB-243528	24"



Fixed Black Shelves

**GAS GRILL BASE - DEEP CUT**

ITEM	WIDTH
------	-------



2 Door (LH/RH)  
 Vented in Floor and Back Panel  
 Custom Appliance Skirt at Top: 16" Tall  
 Does not Accommodate a LP Tank

OGGBD-363528	36"
OGGBD-393528	39"
OGGBD-423528	42"
OGGBD-453528	45"
OGGBD-483529	48"

### GAS GRILL / SIDE BURNER BASE



Appliance Skirt: 12" Tall  
 18" - 27" - Side Burner  
 30" -66"- Gas Grill Base  
 12" - 24" = 1 Door (LH or RH)  
 27" - 48" = 2 Door (LH/RH)  
 51"-54"= 3 Door (LH/RH/RH)  
 57" - 66" = 4 Door (LH/RH/LH/RH)  
 Vented in Floor and Back Panel  
 Does not Accommodate a LP Tank

ITEM	WIDTH
OGGB-183528	18"
OGGB-213528	21"
OGGB-243528	24"
OGGB-273528	27"
OGGB-303528	30"
OGGB-333528	33"
OGGB-363528	36"
OGGB-393528	39"
OGGB-423528	42"
OGGB-453528	45"
OGGB-483528	48"
OGGB-513528	51"
OGGB-543528	54"
OGGB-573528	57"
OGGB-603528	60"
OGGB-633528	63"
OGGB-663528	66"
OGGB-423532	42"
OGGB-483532	48"
OGGB-543532	54"
OGGB-603532	60"
OGGB-663532	66"



### GAS GRILL BASE w/WARMING DRAWER



Custom Appliance Skirt at Top: 12" Tall  
 Custom False Panel in Bottom Front for Warming Drawer  
 Vented in Floor and Back Panel  
 Does not Accommodate a LP Tank

ITEM	WIDTH
OGGWDB-363528	36"
OGGWDB-423528	42"
OGGWDB-483528	48"
OWDDB-363528	36"

(For Warming Drawer Only - No Grill)

### GRILL BASE w/DOOR & DRW



Appliance Skirt: 12" Tall  
 Drawer 1 & 2: 7.2" H  
 1 Door (RH ONLY) 15.69" W x 16" H  
 Sub floor over drawers; 12" from top of cabinet  
 Vented in Back Panel  
 Does not Accommodate a LP Tank

ITEM	WIDTH
ODDGGB-363528	36"
ODDGGB-393528	39"
ODDGGB-423528	42"
ODDGGB-453528	45"
ODDGGB-483528	48"

## MEMPHIS CONTROL PANEL BASE



False Panel at Top  
Offered as Left Hinge ONLY, Install on Left of Grill Base  
Does NOT include Control Panel Box

ITEM	WIDTH
OMCB-183528L	18"

## EVO GRILL BASE



2 Door (LH/RH)  
Does not Accommodate a LP Tank  
1 1/2" front countertop overhang required

ITEM	WIDTH
OEGB-363528	FOR 25G
OEGB-393534	39" (34"Deep)

## POWER BURNER BASE



Custom Appliance Shelf Height/Width  
1 Drawer: 10" H  
CANNOT be at End of Cabinet Run or Beside Opening

ITEM	WIDTH
OPBB-243528	24"
OPBB-273528	27"
OPBB-303528	30"
OPBB-363528	36"
PBCOVER-24SS	24" Power Burner Cover, Stainless Steel
PBCOVER-27SS	27" Power Burner Cover, Stainless Steel
PBCOVER-30SS	30" Power Burner Cover, Stainless Steel
PBCOVER-36SS	36" Power Burner Cover, Stainless Steel
PBCOVER-24AL	24" Power Burner Cover, Aluminum
PBCOVER-27AL	27" Power Burner Cover, Aluminum
PBCOVER-30AL	30" Power Burner Cover, Aluminum
PBCOVER-36AL	36" Power Burner Cover, Aluminum

## CERAMIC GRILL BASE



Shelf Height Adjusts to Grill Brand/Model  
24" - 1 Door (LH or RH),  
30" & 33" - 2 Door (LH/RH)  
24"W - Med. or LG. Grill, 30" & 33"W - LG or XL Grill  
28"D for Med or LG Grill, 30"D for LG or XL Grill

ITEM	WIDTH
OCGC-243528	24"
OCGC-303528	30"
OCGC-243530	24" (30" deep)
OCGC-303530	30" (30" deep)
OCGC-303532	30" (32" deep)
OCGC-303536	30" (36" deep)
OCGC-333530	33" (30" deep)
OCGDB-303530	For KJ Classic III
OCGDB-303536	For KJ Big Joe III

Please Provide Appliance(s) Brand & Model  
Island is recommended. If unit is to remain stationary against a wall, the cabinet must be  
28" Deep for a Medium Grill, 32" Deep for a Large Grill, and 36" Deep for an Extra Large Grill.  
(Kamado Joe II & III are exempt from these specifications due to Hinge Size & Grill Height)

## CORNER CERAMIC GRILL BASE



Shelf Height Adjusts to Grill Brand/Model  
1 Door (LH or RH) Width = 13.75"  
Med., LG., or XL Grill  
CANNOT be at End of Cabinet Run or Beside Opening

ITEM	WIDTH
OICGC-403528	40"

## OUTSIDE ANGLE BASE

ITEM	DIMENSIONS
OAB-283528	



1 adjustable shelf  
Installs in corner or between two cabinets

## CERAMIC GRILL STAND

ITEM	DIMENSIONS
OCGS-301728	30"W X 17" H



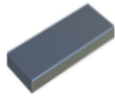
1 Drawer: 10" H

Please Provide Appliance(s) Brand & Model

Island is recommended. If unit is to remain stationary against a wall, the cabinet must be offset to accommodate certain Grill Brands/Models.

## ADDITIONAL SHELF FOR BASE

ITEM	WIDTH
BLAS-1828	18"
BLAS-2128	21"
BLAS-2428	24"
BLAS-2728	27"
BLAS-3028	30"



60 lb weight rating  
Not Available for All Base Cabinets

## OUTDOOR ISLAND BASE (OIB)

ITEM	WIDTH
OIB-24-48" x 24.875"D	24" - 48"
OIB-49-72 x 24.875"D	49" - 72"
OIB-73-96 x 24.875"D	73" - 96"



THIS ALLOWS FOR A ONE PIECE - FULLY ENSEMBLED UNIT

Available with Legs 4"H Adjustable or 3"H Casters (ADA legs n/a)  
24"-71" = 4 Casters/Legs, 72"-96" = 6 Casters/ Legs  
CANNOT be used with Free Standing Appliances (ex: refer)  
Color Matches Cabinet Frame  
Used for One Piece Build (Comparable to Coastals)

3.125" Shallower than cabinets

Example 28"D cabinet- 3.125"= 24.875"D Outdoor Island Base

Island Base with Casters adds 1 7/8" to Cabinet Height

Island Base with Legs adds 1 9/16" to Cabinet Height

# LOCKERS & OVERHEAD CABINETS

## 78" LOCKER

ITEM	WIDTH
OCL-187829.5	18"
OCL-217829.5	21"
OCL-247829.5	24"
OCL-277829.5	27"
OCL-307829.5	30"



1 Door (LH or RH)  
1 Full Width Adjustable Shelves  
1 Full Width Adjustable Shelf with Coat Hanger  
Must be Attached to a Wall  
Cannot be used with an Outdoor Island Base  
Comes with finished sides and back

## 84" LOCKER

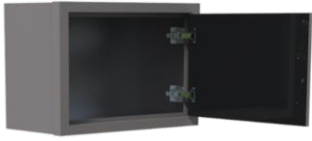
ITEM	WIDTH
OCL-188429.5	18"
OCL-218429.5	21"
OCL-248429.5	24"
OCL-278429.5	27"
OCL-308429.5	30"



1 Door (LH or RH)  
1 Full Width Adjustable Shelves  
1 Full Width Adjustable Shelf with Coat Hanger  
Must be Attached to a Wall  
Cannot be used with an Outdoor Island Base  
Comes with finished sides and back



### 18" OVERHEAD



ITEM	WIDTH
KOC-121812	12"
KOC-151812	15"
KOC-181812	18"
KOC-211812	21"
KOC-241812	24"
KOC-271812	27"
KOC-301812	30"
KOC-331812	33"
KOC-361812	36"

12" - 24" = 1 Door (LH or RH)  
 27" - 36" = 2 Door (LH/RH)  
 Comes with finished sides

### 24" OVERHEAD



ITEM	WIDTH
KOC-122412	12"
KOC-152412	15"
KOC-182412	18"
KOC-212412	21"
KOC-242412	24"
KOC-272412	27"
KOC-302412	30"
KOC-332412	33"
KOC-362412	36"

1 Full Width Adj Shelf  
 12" - 24" = 1 Door (LH or RH)  
 27" - 36" = 2 Door (LH/RH)  
 Comes with finished sides

### 30" OVERHEAD



ITEM	WIDTH
KOC-123012	12"
KOC-153012	15"
KOC-183012	18"
KOC-213012	21"
KOC-243012	24"
KOC-273012	27"
KOC-303012	30"
KOC-333012	33"
KOC-363012	36"

1 Full Width Adj Shelf  
 12" - 24" = 1 Door (LH or RH)  
 27" - 36" = 2 Door (LH/RH)  
 Comes with finished sides

### 36" OVERHEAD



ITEM	WIDTH
KOC-123612	12"
KOC-153612	15"
KOC-183612	18"
KOC-213612	21"
KOC-243612	24"
KOC-273612	27"
KOC-303612	30"
KOC-333612	33"
KOC-363612	36"

2 Full Width Adj Shelves  
 12" - 24" = 1 Door (LH or RH)  
 27" - 36" = 2 Door (LH/RH)  
 Comes with finished sides

### BLIND CORNER OVERHEAD



ITEM	DIMENSIONS
OOBC-361812	36"W x 18" H
OOBC-362412	36" W x 24" H
OOBC-363012	36"W x 30" H
OOBC-363612	36"W x 36" H

18" High - No Shelf  
 24" & 30" - 1 Full Width Adj Shelf  
 All Cabinets 1 Door (LH or RH)  
 Comes with finished sides

## INSIDE CORNER OVERHEAD



18" High - No Shelf  
 24" & 30" - 1 Shelf  
 All Cabinets 1 Door (LH or RH)  
 CANNOT be at End of Cabinet Run or Beside Opening  
 3" Filler panel recommended for door clearance  
 \*\*SIDES NOT FINISHED\*\*

ITEM	DIMENSIONS
KOIC-241812	24" W x 18" H
KOIC-242412	24" W x 24" H
KOIC-243012	24" W x 30" H
KOIC-243612	24" W x 36" H

## ADDITIONAL SHELF FOR OVERHEAD



ITEM	WIDTH
OAS-12	12"
OAS-15	15"
OAS-18	18"
OAS-21	21"
OAS-24	24"
OAS-27	27"
OAS-30	30"
OAS-33	33"
OAS-36	36"

# COUNTERTOP OPTIONS

## ALUMINUM COUNTERTOPS



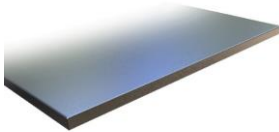
ITEM	DESCRIPTION
ACT- 28.5	Countertop, 28.5" D x 1.25" Thick
ACT- 29	Countertop, 29" D x 1.25" Thick
ACT-30.5	Countertop, 30.5"D x 1.25" Thick
ACT- 31	Countertop, 31" D x 1.25" Thick
ACT-32.5	Countertop, 32.5"D x 1.25" Thick
ACT- 33	Countertop, 33"D x 1.25" Thick
ACT- 36.5	Countertop, 36.5"D x 1.25" Thick
ACT- 37	Countertop, 37" D x 1.25" Thick

ABS-4	BACKSPLASH, 4"H x 1"Thick
-------	---------------------------

ALL PRICING IS COST PER LINEAL INCH  
 .090 Aluminum Powdercoated  
 Top overhang is 1/2" on all sides; unless against wall

ABT-16	BAR TOP WITH RISERS, 16"D x 1.25"Thick Bar Top Corner Support Measurements: 8" W x 8"D x 5" H; Center Support Measurements: 12" W x 5" H Center Supports are needed for every 5' of Bar Top Countertop Overlap of Bar Top is 9", Edge Overhang of 7"
--------	---

## STAINLESS STEEL COUNTERTOPS



ITEM	DESCRIPTION
SST-28.5	Countertop, 28"D x 1.25" Thick
SST-29	Countertop, 29" D x 1.25" Thick
SST-30.5	Countertop, 30.5"D x 1.25" Thick
SST-31	Countertop, 31"D x 1.25" Thick
SST-32.5	Countertop, 32.5"D x 1.25" Thick
SST-33	Countertop, 33"D x 1.25" Thick
SST-36.5	Countertop, 36.5"D x 1.25" Thick
SST-37	Countertop, 37"D x 1.25" Thick

SSBS -4	BACKSPLASH, 4"H x 1"Thick
---------	---------------------------

ALL PRICING IS COST PER LINEAL INCH  
 16 Gauge food grade Stainless Steel  
 Top overhang is 1/2" on all sides; unless against wall

SSBT-16	BAR TOP WITH RISERS, 16"D x 1.25"Thick
---------	--

## ADD-ONS | OPTIONS

### PREMIUM 30" SINK



#### ITEM

SINK-30

#### DESCRIPTION

30" Premium Sink and Sprayer Spring Faucet  
 304, 18G Stainless Steel, Undermount Sink Installation  
 Brushed Satin Finish Sink Basin, Brushed Nickel Finished Spring Faucet  
 Overall Dimensions: 31.25"W x 18"D x 9"H; Basin Dimensions: 29.25"W x 16"D  
 Faucet Requires 20" Clearance Height  
 Minimum 39" Sink Base with side mounted faucet

### STANDARD SINK



SINK-15

15" Standard Sink and Faucet

201, 18G Stainless Steel, Undermount Installation  
 Brushed Satin Finish Sink Basin, Brushed Nickel Finish Faucet  
 Overall Dimensions: 15"W x 15"D x 5.5"H; Basin Dimensions: 13"W x 11.0625"D

### ON DEMAND WATER SYSTEM

WTP

On Demand Water System

12 Volt Pump, Battery Not Included  
 One 5-gal Fresh Water Tank | One 5-gal Gray Water Tank

### LEG OPTION

4ADALEGS

Set of 4- ADA Compliant Legs, 1.5"-2.5" Tall

Cannot accommodate Toe Kick



### TOWEL BAR / GRAB HANDLE

TBH

Towel bar Handle

Towel Bar/Grab Handle for maneuvering units  
 Adds 4 1/4" width to cabinet, 3 3/4" width to overall run

# ADD-ONS | OPTIONS

END PANEL	ITEM	DESCRIPTION
	EP-28D	End Panel, 35"H x 28"D
	EP-30D	End Panel, 35"H x 30"D
	EP-32D	End Panel, 35"H x 32"D
	EP-36D	End Panel, 35"H x 36"D
		Includes 2 Count 1/2" Adjustable Feet Provides Countertop Support By Appliance Openings or Corners
FILLER PANEL	FP-13"H	Ceramic Grill Stand Filler Panel, (SPECIFY WIDTH)"W X 13"H
	FP-18"H	Overhead Filler Panel, (SPECIFY WIDTH)"W X 18"H
	FP-24"H	Overhead Filler Panel, (SPECIFY WIDTH)"W X 24"H
	FP-30"H	Overhead Filler Panel, (SPECIFY WIDTH)"W X 30"H
	FP-31"H	Base Filler Panel, (SPECIFY WIDTH)"W X 31"H
	FP-36"H	Overhead Filler Panel, (SPECIFY WIDTH)"W X 31"H
	FP-74"H	Locker Filler Panel, (SPECIFY WIDTH)"W X 74"H
	FP-80"H	Locker Filler Panel, (SPECIFY WIDTH)"W X 80"H
		1" Minimum Width   6" Maximum width
FILLER ANGLE KIT	FAK-30D	Filler Angle Kit, 30 Degrees
	FAK-45D	Filler Angle Kit, 45 Degrees
		Kit Includes: 2 Angle Pieces & 2 Finished Back Panels (5.1875" W for 30 Degree & 9.3125"W for 45 Degree) Does Not Provide Countertop Support
OUTSIDE CORNER PANEL KIT	OCP-KIT	OUTSIDE CORNER PANEL KIT(SPECIFY WIDTHS) (Ships unassembled)
		
FINISHED BACK PANEL	FBP- 31"H	Framed, Finished Back Panel, (SPECIFY WIDTH)"W X 31"H 6" Minimum Width   48" Maximum width Commonly used between Cabinets to Create an Appliance Opening
FLUTED FILLER POST	DFP-31.5"H-19	Fluted Filler Posts, 3"W x 3"D x 31.5"H
	DFP-35"H-19	Fluted Filler Posts, 3"W x 3"D x 34"H
		Ships with Adjustable Sleeve 31.5"H for ADA Legs, 35"H for Standard 4" Adjustable Legs
TOE KICK	17TK-94W	Toe Kick, 94" Powder Coated Aluminum Clips onto 4" Adjustable Legs Cut to size at installation CANNOT be used with ADA Legs
TOE KICK EXTENSIONS	TKE-2	1"x 2" x 94" Toe Kick Extension with Qty (2) -8" corners
	TKE-3	1"x 3" x 94" Toe Kick Extension with Qty (2) -8" corners
	TKE-4	1"x 4" x 94" Toe Kick Extension with Qty (2) -8" corners
SHEET METAL	PCP- (Specify Color)	Aluminum Finished Panel,(060), (SPECIFY HEIGHT AND WIDTH) ALL PRICING IS COST PER SQUARE FOOT
	PCP-SST	Stainless Steel Finished Panel, (SPECIFY HEIGHT AND WIDTH) ALL PRICING IS COST PER SQUARE FOOT
		
ACCESSORIES (shipped loose)	GRATEHANGER	Grate Hanger, Stainless Steel
	TOOLHOOK	Tool/Utensil Hook, Textured Black
	TOWELHOLDER	Paper Towel Holder, Textured Black (21" or 24"w cabinets only)