

**CHALLENGER DESIGNS**

REFINED STYLE. UNMATCHED DURABILITY.

# **GARAGE**

## **2024 Catalog**

Effective March 1, 2024

**CLASSIC**

- > Anodized Frame
- > Smooth Finish Doors, & Panels
- > Anodized Extruded Pulls
- > Pan Door Construction

**ELITE**

- > Powder Coated Frame, Doors,& Panels
- > Stainless Steel Pulls OR Powder Coated Extruded Pulls
- > Pan Door Construction
- > Shaker Door Option available

# CHALLENGER DESIGNS

MSRP = .50 of LIST

**3-Drawer Base**



(35" high)

ITEM	WIDTH
3DBC-183524	18"
3DBC-213524	21"
3DBC-243524	24"
3DBC-273524	27"
3DBC-303524	30"
3DBC-333524	33"
3DBC-183518	18"
3DBC-213518	21"
3DBC-243518	24"
3DBC-273518	27"
3DBC-303518	30"
3DBC-333518	33"

(39" high)

ITEM	WIDTH
3DBC-183924	18"
3DBC-213924	21"
3DBC-243924	24"
3DBC-273924	27"
3DBC-303924	30"
3DBC-333924	33"
3DBC-183918	18"
3DBC-213918	21"
3DBC-243918	24"
3DBC-273918	27"
3DBC-303918	30"
3DBC-333918	33"

**5-Drawer Base**



(35" high)

ITEM	WIDTH
5DBC-183524	18"
5DBC-213524	21"
5DBC-243524	24"
5DBC-273524	27"
5DBC-303524	30"
5DBC-333524	33"
5DBC-183518	18"
5DBC-213518	21"
5DBC-243518	24"
5DBC-273518	27"
5DBC-303518	30"
5DBC-333518	33"

(39" high)

ITEM	WIDTH
5DBC-183924	18"
5DBC-213924	21"
5DBC-243924	24"
5DBC-273924	27"
5DBC-303924	30"
5DBC-333924	33"
5DBC-183918	18"
5DBC-213918	21"
5DBC-243918	24"
5DBC-273918	27"
5DBC-303918	30"
5DBC-333918	33"

**7-Drawer Base**



(35" high)

ITEM	WIDTH
7DBC-183524	18"
7DBC-213524	21"
7DBC-243524	24"
7DBC-273524	27"
7DBC-303524	30"
7DBC-333524	33"

7DBC-183518	18"
7DBC-213518	21"
7DBC-243518	24"
7DBC-273518	27"
7DBC-303518	30"
7DBC-333518	33"

(39" high)

ITEM	WIDTH
7DBC-183924	18"
7DBC-213924	21"
7DBC-243924	24"
7DBC-273924	27"
7DBC-303924	30"
7DBC-333924	33"

7DBC-183918	18"
7DBC-213918	21"
7DBC-243918	24"
7DBC-273918	27"
7DBC-303918	30"
7DBC-333918	33"

**Sink Base**



(35" high)

ITEM	WIDTH
GSB-183524	18"
GSB-213524	21"
GSB-243524	24"
GSB-273524	27"
GSB-303524	30"
GSB-333524	33"
GSB-363524	36"
GSB-393524	39"
GSB-423524	42"
GSB-453524	45"
GSB-483524	48"

False Panel at Top  
 12" - 24" = 1 Door (LH or RH)  
 27" - 48" = 2 Door (LH/RH)

GSB-183518	18"
GSB-213518	21"
GSB-243518	24"
GSB-273518	27"
GSB-303518	30"
GSB-333518	33"
GSB-363518	36"
GSB-393518	39"
GSB-423518	42"
GSB-453518	45"
GSB-483518	48"

(39" high)

ITEM	WIDTH
GSB-183924	18"
GSB-213924	21"
GSB-243924	24"
GSB-273924	27"
GSB-303924	30"
GSB-333924	33"
GSB-363924	36"
GSB-393924	39"
GSB-423924	42"
GSB-453924	45"
GSB-483924	48"

False Panel at Top  
 12" - 24" = 1 Door (LH or RH)  
 27" - 48" = 2 Door (LH/RH)

(39" high)	ITEM	WIDTH
	GSB-183918	18"
	GSB-213918	21"
	GSB-243918	24"
	GSB-273918	27"
	GSB-303918	30"
	GSB- 333918	33"
	GSB-363918	36"
	GSB- 393918	39"
	GSB- 423918	42"
	GSB- 453918	45"
	GSB-483918	48"

**1-Drawer Base Cabinet**  
(17" high)



(17" high)	ITEM	WIDTH
	1DBC-241724	24"
	1DBC-271724	27"
	1DBC-301724	30"
	1DBC-241718	24"
	1DBC-271718	27"
	1DBC-301718	30"

**Door Drawer Base**

(35" high)



1 Drawer: 5"H  
1 Full Width Shelf  
12" - 24" = 1 Door (LH or RH)  
27" - 36" = 2 Door (LH/RH)

(35" high)	ITEM	WIDTH
	GSDDB-153524	15"
	GSDDB-183524	18"
	GSDDB-213524	21"
	GSDDB-243524	24"
	GSDDB-273524	27"
	GSDDB-303524	30"
	GSDDB- 333524	33"
	GSDDB-363524 (2 drawers)	36"
	GSDDB-153518	15"
	GSDDB-183518	18"
	GSDDB-213518	21"
	GSDDB-243518	24"
	GSDDB-273518	27"
	GSDDB-303518	30"
	GSDDB- 333518	33"
	GSDDB-363518 (2 drawers)	36"

(39" high)	ITEM	WIDTH
	GSDDB-153924	15"
	GSDDB-183924	18"
	GSDDB-213924	21"
	GSDDB-243924	24"
	GSDDB-273924	27"
	GSDDB-303924	30"
	GSDDB- 333924	33"
	GSDDB-363924 (2 drawers)	36"
	GSDDB-153918	15"
	GSDDB-183918	18"
	GSDDB-213918	21"
	GSDDB-243918	24"
	GSDDB-273918	27"
	GSDDB-303918	30"
	GSDDB- 333918	33"
	GSDDB-363918 (2 drawers)	36"

**Door Base**

(35" high)



1 Full Width Shelf  
 12" - 24" = 1 Door (LH or RH)  
 27" - 36" = 2 Door (LH/RH)

ITEM	WIDTH
GDB-123524	12"
GDB-153524	15"
GDB-183524	18"
GDB-213524	21"
GDB-243524	24"
GDB-273524	27"
GDB-303524	30"
GDB-333524	33"
GDB-363524	36"
GDB-123518	12"
GDB-153518	15"
GDB-183518	18"
GDB-213518	21"
GDB-243518	24"
GDB-273518	27"
GDB-303518	30"
GDB-333518	33"
GDB-363518	36"

(39" high)

1 Full Width Shelf  
 12" - 24" = 1 Door (LH or RH)  
 27" - 36" = 2 Door (LH/RH)

ITEM	WIDTH
GDB-123924	12"
GDB-153924	15"
GDB-183924	18"
GDB-213924	21"
GDB-243924	24"
GDB-273924	27"
GDB-303924	30"
GDB-333924	33"
GDB-363924	36"
GDB-123918	12"
GDB-153918	15"
GDB-183918	18"
GDB-213918	21"
GDB-243918	24"
GDB-273918	27"
GDB-303918	30"
GDB-333918	33"
GDB-363918	36"

**Door Base - Internal Slide Out Shelves**

(35" high)



2 Internal Slide Outs (1 Top Middle, 1 Floor Mount)  
 15"-24"= 1 Door (LH or RH)  
 27" & 30"= 2 Door (LH/RH)

ITEM	WIDTH
GISDB-153524	15"
GISDB-183524	18"
GISDB-213524	21"
GISDB-243524	24"
GISDB-273524	27"
GISDB-303524	30"

(39" high)

2 Internal Slide Outs (1 Top Middle, 1 Floor Mount)  
 15"-24"= 1 Door (LH or RH)  
 27" & 30"= 2 Door (LH/RH)

ITEM	WIDTH
GISDB-153924	15"
GISDB-183924	18"
GISDB-213924	21"
GISDB-243924	24"
GISDB-273924	27"
GISDB-303924	30"

**Knee Hole - Pencil Drawer**

(7.25" high)



7.25" High Drawer  
24" - 36" = 1 Drawer | 42" - 48" = 2 Drawer

ITEM	WIDTH
GKND-247.2524	24"
GKND-277.2524	27"
GKND-307.2524	30"
GKND-337.2524	33"
GKND-367.2524	36"
GKND-427.2524	42"
GKND-487.2524	48"
GKND-247.2518	24"
GKND-277.2518	27"
GKND-307.2518	30"
GKND-337.2518	33"
GKND-367.2518	36"
GKND-427.2518	42"
GKND-487.2518	48"

**Inside Corner Base**

(35" high)



1 Door (LH or RH)  
1 Full Width Shelf  
Door Width = 13 3/4"

CANNOT be at End of Cabinet Run or Beside Opening

ITEM	WIDTH
GICB-363524	36"

(39" high)

1 Door (LH or RH)  
1 Full Width Shelf  
Door Width = 13 3/4"

CANNOT be at End of Cabinet Run or Beside Opening

ITEM	WIDTH
GICB-363924	36"

**Blind Base**

(35" high)



1 Door (LH or RH)  
1 Full Width Shelf

ITEM	WIDTH
GBBC-483524	48"
GBBC-483518	48"

(39" high)

1 Door (LH or RH)  
1 Full Width Shelf

ITEM	WIDTH
GBBC-483924	48"
GBBC-483918	48"

**Bolt Bin Base**

(35" high)



1 Drawer (Left or Right Access)  
25 Plastic Bolt Bins

ITEM	WIDTH
GBB-123524-RA	12"
GBB-123524-LA	12"

(39" high)	ITEM	WIDTH
1 Drawer (Left or Right Access)	GBB-123924-RA	12"
25 Plastic Bolt Bins	GBB-123924-LA	12"

### Waste Basket Base



1 Drawer: 5" H  
Slide Out Waste Bin Tray  
18" Single Waste Bin, 24" Double Waste Bin

(35" high)	ITEM	WIDTH
	GWB-183524 (Single bin)	18"
	GWB-243524 (Double bin)	24"
	GWB-183518 (Single bin)	18"
	GWB-243518 (Single bin)	24"

(39" high)	ITEM	WIDTH
	GWB-183924	18"
	GWB-243924	24"
1 Drawer: 5" H Slide Out Waste Bin Tray	GWB-183918	18"
18" Single Waste Bin, 24" Double Waste Bin	GWB-243918	24"

### Air Hose Base

**\*\*NEW\*\***



Hose Reel Included

(35" high)	ITEM	WIDTH
	AHB-183524	18"

(39" high)	ITEM	WIDTH
	AHB-183924	18"

### Lockers



1 Door (LH or RH)  
2 Adjustable Shelves  
1 Full Width Shelf with attached Coat Hanger

78" high Locker	ITEM	WIDTH
	GCL-187825.5	18"
	GCL-217825.5	21"
	GCL-247825.5	24"
	GCL-277825.5	27"
	GCL-307825.5	30"
	GCL-187819.5	18"
	GCL-217819.5	21"
	GCL-247819.5	24"
	GCL-277819.5	27"
	GCL-307819.5	30"

84" high Locker



1 Door (LH or RH)  
 2 Full Width Adjustable Shelves  
 1 Full Width Shelf with attached Coat Hanger

ITEM

WIDTH

GCL-188425.5	18"
GCL-218425.5	21"
GCL-248425.5	24"
GCL-278425.5	27"
GCL-308425.5	30"
GCL-188419.5	18"
GCL-218419.5	21"
GCL-248419.5	24"
GCL-278419.5	27"
GCL-308419.5	30"

90" high Locker



(4 Doors)  
 (4 Doors)  
  
 (4 Doors)  
 (4 Doors)  
 2 Door (LH or RH)  
 2 Adjustable Shelves  
 1 Full Width Shelf with attached Coat Hanger

ITEM

WIDTH

GCL-189025.5	18"
GCL-219025.5	21"
GCL-249025.5	24"
GCL-279025.5	27"
GCL-309025.5	30"
GCL-369025.5	36"
GCL-189019.5	18"
GCL-219019.5	21"
GCL-249019.5	24"
GCL-279019.5	27"
GCL-309019.5	30"
GCL-369019.5	36"

Locker Combination



1 Full Width fixed hanging rod at top &  
 2 Adjustable Shelves,  
 (1 top and 1 at bottom)

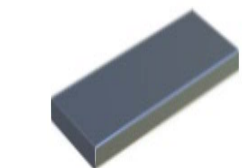
ITEM

WIDTH

GCLC-248425.5	24"
GCLC-368425.5	36" (4 Door)
GCLC-248419.5	24"
GCLC-368419.5	36" (4 Door)

BASE & LOCKER OPTIONS

Additional Base & Locker Shelves



ITEM

WIDTH

BLAS-1224	12"
BLAS-1524	15"
BLAS-1824	18"
BLAS-2124	21"
BLAS-2424	24"
BLAS-2724	27"
BLAS-3024	30"
BLAS-3324	33"
BLAS-3624	36"



## Double Rolling Tool Chest

	ITEM	WIDTH
POWDERCOATED TOP	GTC-58.2538.525	58.25"
HARD MAPLE BUTCHER BLOCK TOP	GTC-58.2538.525	58.25"



Two - 5 Drawer Tool Boxes (Either End)  
 One - Wastebin (Center)  
 Four Locking Swivel Casters  
 Towel/Grab Bar (Right)

## Mobile Island Base

ITEM	WIDTH
OIB-24-48" x 21.875"D	24" - 48"
OIB-49-72 x 21.875"D	49" - 72"
OIB-73-96 x 21.875"D	73" - 96"




Available with Legs 4"H Adjustable or 3"H Casters  
 24"-71" = 4 Casters/Legs, 72"-96" = 6 Casters/ Legs  
 CANNOT be used with Stand-Alone Appliances  
 Color Matches Cabinet Frame  
 Classic - Textured Black Frame  
 Used for One Piece Build (Comparable to Tool Chest)  
 \*Cabs require back panel


Island Base with Casters adds 5 7/8" to Cabinet Height  
 Island Base with Legs adds 5 9/16" to Cabinet Height


## ALL OVERHEADS ARE 12" DEEP

### Overheads


18" (high)	ITEM	WIDTH
 <p>No Shelf                      12" - 24" = 1 Door                      27" - 36" = 2 Door</p>	GOC-121812	12"
	GOC-151812	15"
	GOC-181812	18"
	GOC-211812	21"
	GOC-241812	24"
	GOC-271812	27"
	GOC-301812	30"
	GOC-331812	33"
	GOC-361812	36"


24" (high)	ITEM	WIDTH
 <p>1 Full Length Adjustable Shelf                      12" - 24" = 1 Door                      27" - 36" = 2 Door</p>	GOC-122412	12"
	GOC-152412	15"
	GOC-182412	18"
	GOC-212412	21"
	GOC-242412	24"
	GOC-272412	27"
	GOC-302412	30"
	GOC-332412	33"
	GOC-362412	36"

30" (high)		ITEM	WIDTH
 <p>1 Full Length Adjustable Shelf 12" - 24" = 1 Door 27" - 36" = 2 Door</p>		GOC-123012	12"
		GOC-153012	15"
		GOC-183012	18"
		GOC-213012	21"
		GOC-243012	24"
		GOC-273012	27"
		GOC-303012	30"
		GOC-333012	33"
	GOC-363012	36"	

36" (high)		ITEM	WIDTH
 <p>2 Full Width Adj Shelves 12" - 24" = 1 Door (LH or RH) 27" - 36" = 2 Door (LH/RH)</p>		GOC-123612	12"
		GOC-153612	15"
		GOC-183612	18"
		GOC-213612	21"
		GOC-243612	24"
		GOC-273612	27"
		GOC-303612	30"
		GOC-333612	33"
	GOC-363612	36"	


Overhead Blind Corner		ITEM	WIDTH
 <p>18" High -No Shelf 24" &amp; 30" - 1 Shelf All Cabinets 1 Door</p>		GOBC-361812	36" W x 18" H
		GOBC-362412	36" W x 24" H
		GOBC-363012	36" W x 30" H

Overhead Inside Corner		ITEM	WIDTH
 <p>18" High -No Shelf 24" &amp; 30" - 1 Shelf All Cabinets 1 Door</p>		GOIC-241812	24 W x 18" H
		GOIC-242412	24" W x 24" H
		GOIC-243012	24" W x 30" H

OVERHEAD OPTIONS			
Additional Overhead Shelves		ITEM	WIDTH
		OAS-12	12"
		OAS-15	15"
		OAS-18	18"
		OAS-21	21"
		OAS-24	24"
		OAS-27	27"
		OAS-30	30"
		OAS-33	33"
	OAS-36	36"	


**GARAGE COUNTERTOPS - 1" OVERHANG STANDARD**

**Aluminum Countertops & Options**

Tops	ITEM	DIMENSIONS
	ACT-19	19" D x 1.25" Thick
	ACT-25	25" D x 1.25" Thick
Backsplash	ITEM	DIMENSIONS
	ABS-4	4" H x 1" Thick
Bar Top with Risers	ITEM	DIMENSIONS
	ABT-16	16"Dx1.25" Thick

.090 Aluminum, Powder Coated  
 ALL Pricing is Cost Per Lineal Inch  
 Countertop Overhang is 1/2" on all sides, UNLESS against wall  
 Bar Top Corner Support Measurements: 8"Wx8"Dx5"H; Center Support Measurements: 12"Wx5"H  
 Center Supports are needed for every 5' of bar top  
 Countertop Overlap of Bar Top is 9", Edge Overhang of 7"

**Stainless Steel Countertops & Options**

Tops	ITEM	DIMENSIONS
	SST-19	19" D x 1.25" Thick
	SST-25	25" D x 1.25" Thick
Backsplash	ITEM	DIMENSIONS
	SSBS-4	4" High x 1" Thick
Bar Top with Risers	ITEM	DIMENSIONS
	SSBT-16	16"Dx1.25" Thick

16G, Food Grade Stainless Steel

ALL Pricing is Cost Per Lineal Inch  
 Countertop Overhang is 1/2" on all sides, UNLESS against wall  
 Bar Top Corner Support Measurements: 8"Wx8"Dx5"H; Center Support Measurements: 12"Wx5"H  
 Center Supports are needed for every 5' of Bar Top


**Butcher Block Countertops & Options**

Tops	ITEM	WIDTH
	BBT-19	19" D x 1.5" Thick
	BBT-25	25" D x 1.5" Thick
Backsplash	ITEM	WIDTH
	BBS-4	4" High x 1 1/2" Thick

Clear Coated Maple Butcher Block  
 ALL Pricing is Cost Per Lineal Inch  
 Countertop Overhang is 1/2" on all sides, UNLESS against wall  
 \*\*\*SINKS NOT ABAILABLE IN BUTCHER BLOCK TOP

**GARAGE ADD ON OPTIONS**

**Sink & Plumbing Options**

30" Premium Sink and Faucet	ITEM	WIDTH
	SINK-30	30"

304, 18G Stainless Steel, Undermount Sink Installation  
 Brushed Satin Finish Sink Basin, Brushed Nickel Finished Spring Faucet  
 Overall Dimensions: 31.25"W x 18"D x 9"H; Basin Dimensions: 29.25"W x 16"D  
 Faucet Requires 20" Clearance Height | Minimum 33" Sink Base-- Faucet Behind Sink Basin  
 Minimum 39" Sink Base-- Faucet on Left/Right of Sink Basin

15" Standard Sink and Faucet	ITEM	WIDTH
	SINK-15	15"

201, 18G Stainless Steel, Undermount Sink Installation,  
 Brushed Satin Finish Sink Basin, Brushed Nickel Finish Faucet  
 Overall Dimensions: 15"W x 15"D x 5.5"H; Basin Dimensions: 13"W x 11.0625"D  
 Minimum 18" Wide Base

On Demand Water System	ITEM	WIDTH
	WTP	

12 Volt Pump, Battery Not Included  
 One 5-gal Fresh Water Tank | One 5-gal Gray Water Tank

**MISCELLANEOUS ACCESSORIES**

**Set of 4 - ADA Compliant Legs**

ITEM	WIDTH
4ADALEGS	1.5"-2.5" Tall CANNOT Accommodate Toe Kick

**Towel Bar Handle**

TBH	Towel Bar/Grab Handle for maneuvering units  Adds 4 1/4" width to cabinet, 3 3/4" width to overall run
-----	--

**End Panel**

ITEM	WIDTH
EP-18D	35"H x 24"D
EP-24D	35"H x 24"D
EP-28D	35"H x 28"D
EP-30D	35"H x 30"D
EP-32D	35"H x 32"D
EP-36D	35"H x 36"D

Includes 2 Count 1/2" Adjustable Feet  
Provides Countertop Support By Appliance Openings or Corners

**Filler Panel**

ITEM	WIDTH
FP-18"H	(SPECIFY)"W X 18"H
FP-24"H	(SPECIFY)"W X 24"H
FP-30"H	(SPECIFY)"W X 30"H
FP-36"H	(SPECIFY)"W X 36"H
FP-31"H	(SPECIFY)"W X 31"H
FP-74"H	(SPECIFY)"W X 74"H
FP-80"H	(SPECIFY)"W X 81"H
FP-86"H	(SPECIFY)"W X 86"H

1" Minimum Width | 6" Maximum width

**Filler Angle Kits**

ITEM	WIDTH
Outside & Inside Filler Angle Kit FAK-30D	30 Degrees
FAK-45D	45 Degrees

Kit Includes: 2 Angle Pieces & 2 Finished Back Panels

(5.1875" W for 30 Degree & 9.3125"W for 45 Degree)  
Does Not Provide Countertop Support

**Fluted Filler Posts**

ITEM	WIDTH
DFP-31.5"H	3"W x 3"D x 31.5"H
DFP-34"H	3"W x 3"D x 34"H

Ships with Adjustable Sleeve  
31.5"H for ADA Legs, 34"H for Standard 4" Adjustable Legs

**Toe Kick**

ITEM	WIDTH
17TK-94W	94"

Clips onto 4" Adjustable Legs  
Cut to size at installation  
CANNOT be used with ADA Legs

### Finished Back Panels

ITEM	WIDTH
FBP-1231	12" W x 31" H
FBP-1531	15" W x 31" H
FBP-1831	18" W x 31" H
FBP-2131	21" W x 31" H
FBP-2431	24" W x 31" H
FBP-2731	27" W x 31" H
FBP-3031	30" W x 31" H
FBP-3331	33" W x 31" H
FBP-3631	36" W x 31" H
FBP-3931	39" W x 31" H
FBP-4231	42" W x 31" H
FBP-4531	45" W x 31" H
FBP-4831	48" W x 31" H

Commonly used between Cabinets to Create an Appliance Opening OR as a Finished Back on an Island  
Adds 1" To Overall Cabinet Depth

### Finished Side Panel

31" (high)

ITEM	WIDTH
FSP-1831	18"D x 31" H
FSP-2431	24"D x 31" H

Applied to Exposed Side of Cabinet for Finished Look

### Shelving Unit

**\*\*NEW\*\***

84" (high)

ITEM	WIDTH
SHELF-24	24" W
SHELF-36	36" W
SHELF-48	48" W



3 shelves

Available in all cabinet colors

All shelving units are 84"high and 18" deep

### Wall Organizer

**\*\*NEW\*\***

ITEM	WIDTH
WO	(SPEC) W x (SPEC)" H

INCLUDES: 1 Small Hook kit and 1 Large Hook Kit  
Available in all colors (cabinet & top colors)

48" x 94" max  
3/4" thickness



ITEM

- HD HOOK
- 3 CAN SHELF
- SCREWDRIVER HOLDER
- SMALL HOOK (4 PACK)
- 3" HOOK (4 PACK)
- SCREWGUN/DRILL HOLDER
- TAPE MEASURE HOLDER
- OPEN TOOL HOLDER
- SINGLE DEWALT BATTERY HOLDER
- DOUBLE DEWALT BATTERY HOLDER
- CUP/SINGLE CAN HOLDER
- MULTI HOOK
- ORBITAL SANDER
- FILE HOLDER
- DRILL BIT HOLDER
- WRENCH HOLDER
- SNOW BOARD KIT